



CATÁLOGO de
Uniformes



Sobre a **Empresa**

Fundada em 1993, a **Brasil Minas Uniformes** vem se consolidando no mercado pela qualidade de seus produtos e excelência no atendimento.

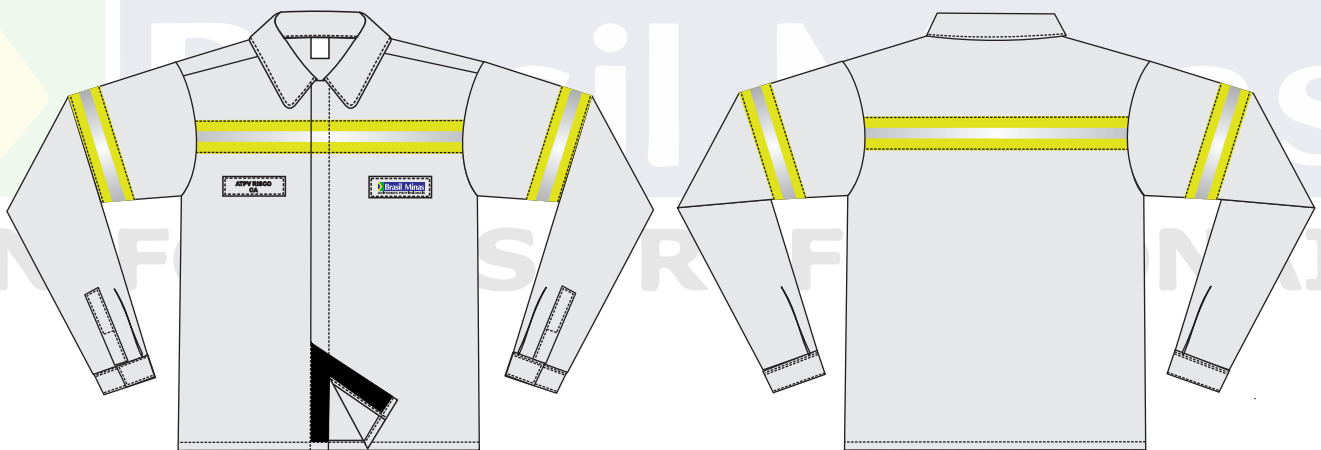
Com uma estrutura física privilegiada, capacidade produtiva e profissionais preparados, oferece produtos de acordo com a necessidade de cada cliente no Brasil e no Exterior.

Com tecnologia de ponta desde o início do processo produtivo, a **Brasil Minas Uniformes** ganha agilidade com altíssima precisão. Com isso, o tempo torna-se aliado resultando em produtividade com qualidade.

Uniformes

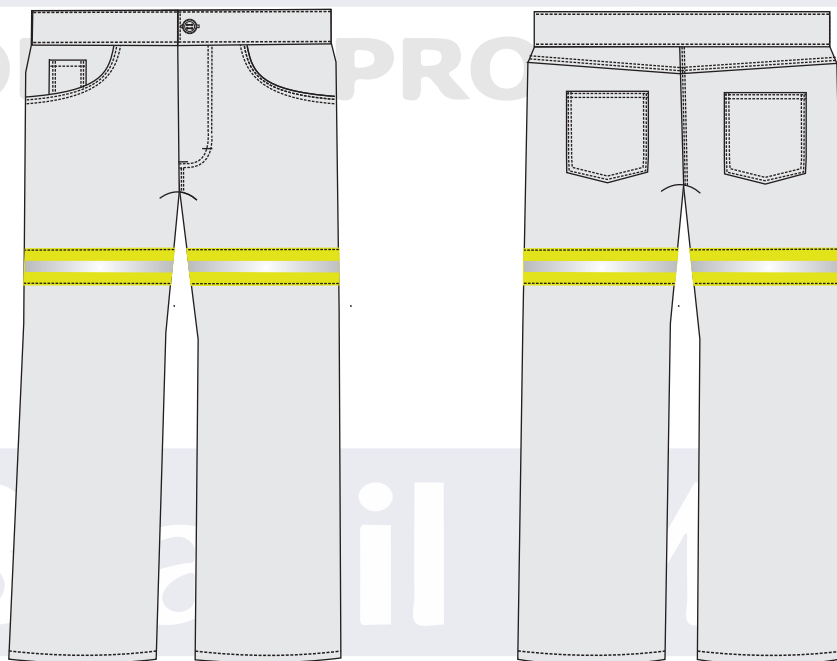
Retardantes a Chamas





RC 114 - CAMISA MANGA LONGA

Brasil Minas

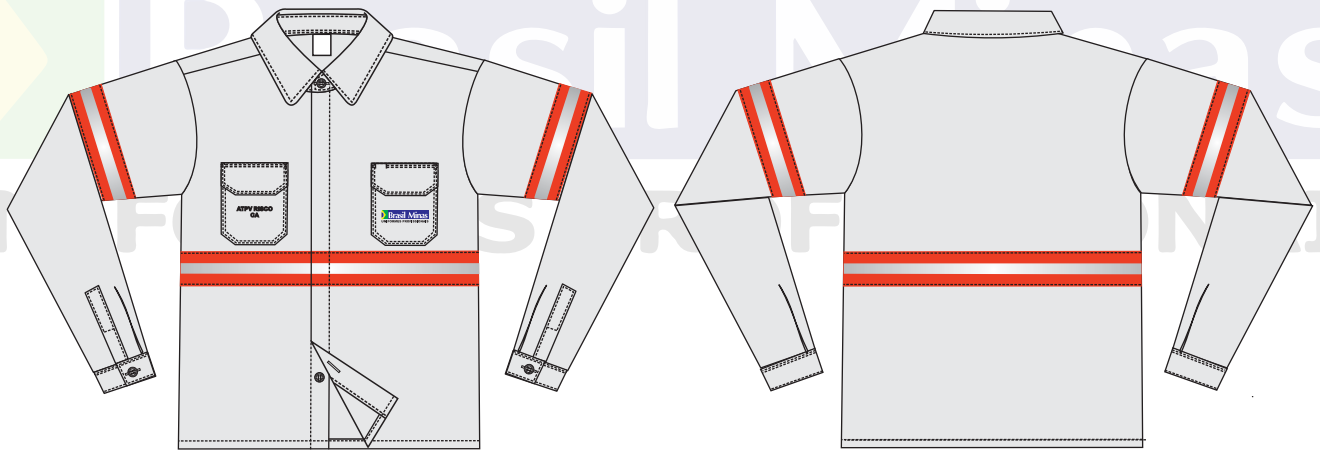


RC 001 - CALÇA TRADICIONAL

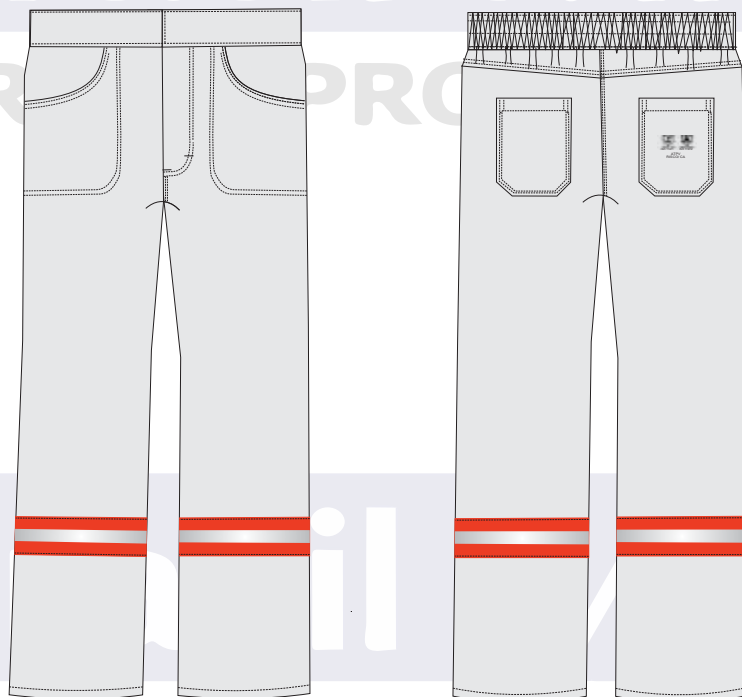
UNIFORMES PROFISSIONAIS

Brasil Minas

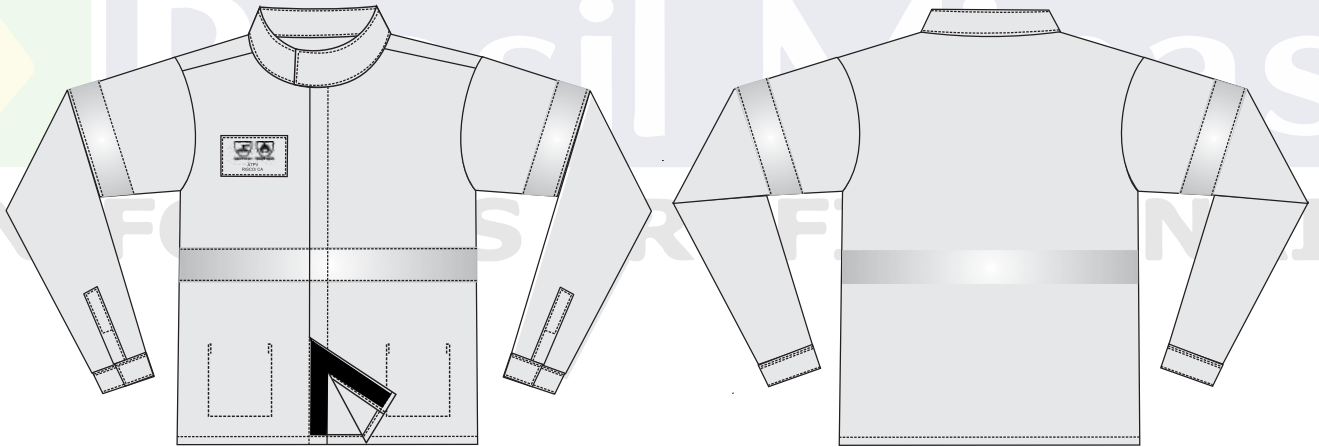
UNIFORMES PROFISSIONAIS



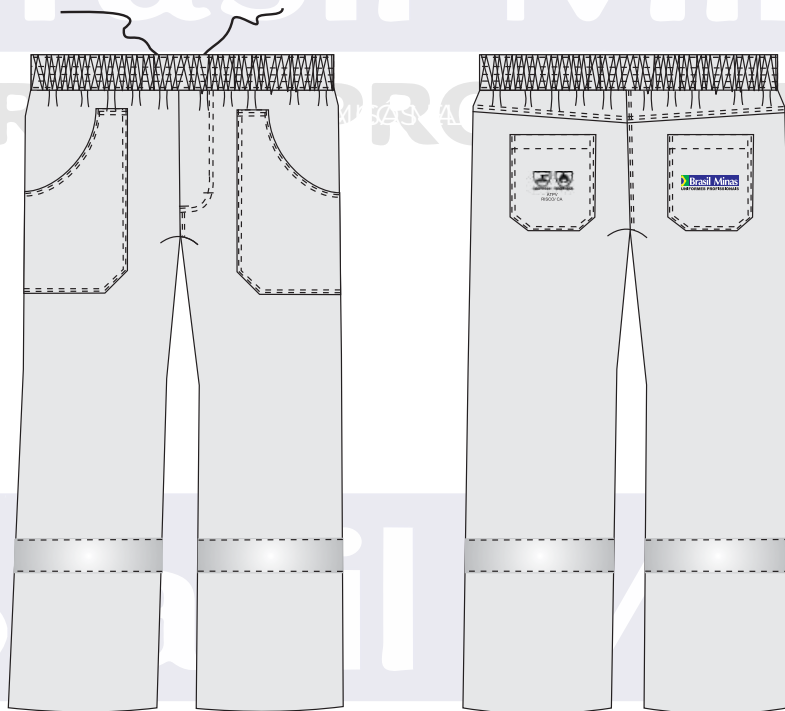
RC 102 - CAMISA MANGA LONGA



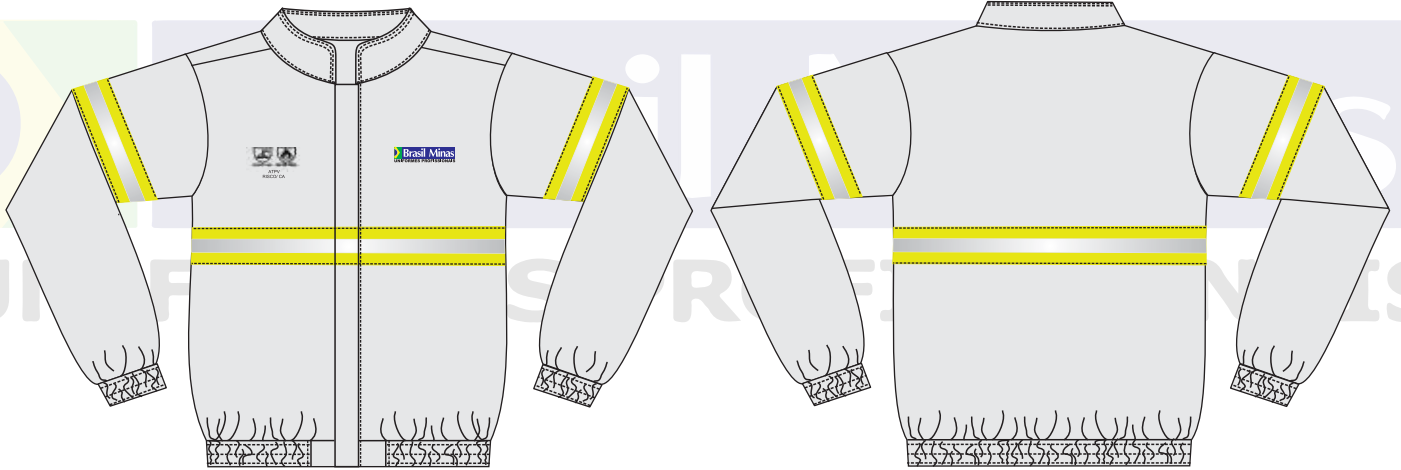
RC 005 - CALÇA TRADICIONAL BOLSO REBATIDO



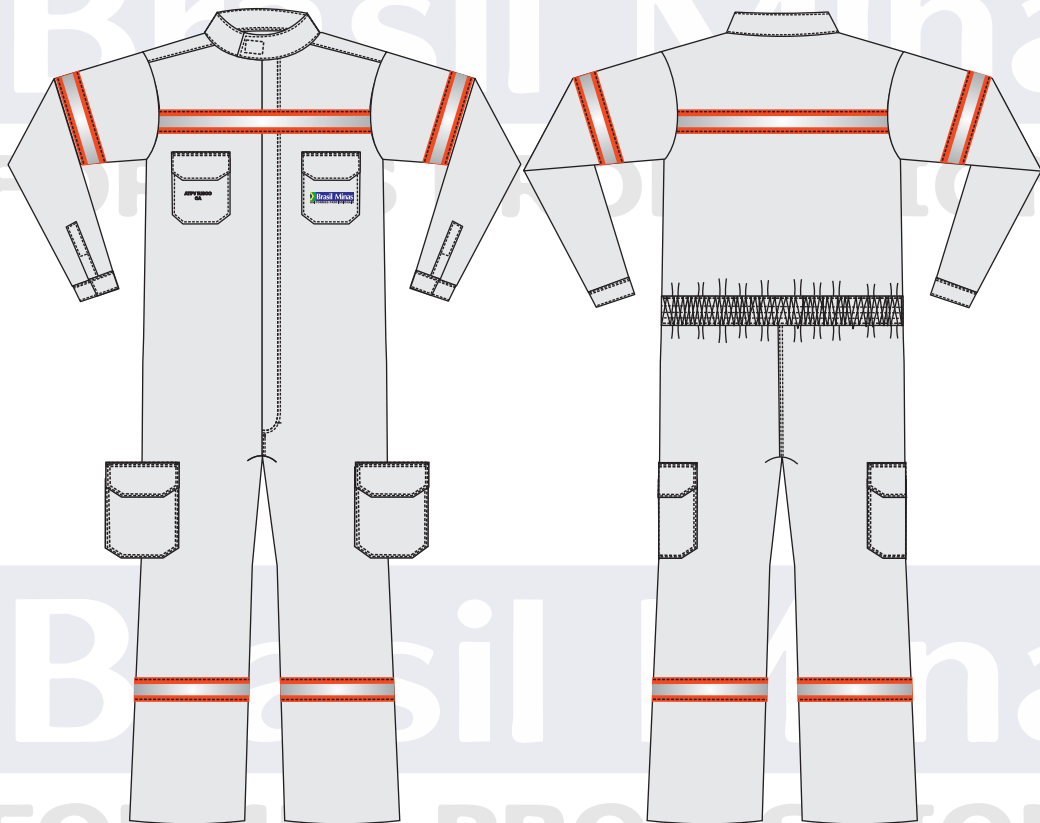
RC 116 - CAMISA MANGA LONGA



RC 007 - CALÇA CÓS ELÁSTICO TOTAL



RC 503 - JAQUETA



RC 010 - MACACÃO MANGA LONGA

Tecidos Retardantes a Chamas
 proteção contra fogo repentino, arco elétrico e respingo de metal fundido
 NR10, ISO 11611 e ISO 11612

TECIDO	COMPOSIÇÃO	ARMAÇÃO	GRAMATURA	ATPV	HAF	RISCO
UNISAFE PRO FIRE	88% ALGODÃO 12% POLIAMIDA	SARJA 3X1	260,0 G/CM ²	12,6 CAL/CM ²	79%	2
UNISAFE SLIM FR	88% ALGODÃO 12% POLIAMIDA	SARJA 3X1	237,0 G/M ²	9,9 CAL/CM ²	76%	2
UNIPAR	48% MODACRÍLICA 37% ALGODÃO 15% para-aramida	SARJA 2X1	225,0 G/M ²	9,6 CAL/CM ²	79%	2
UNIFORTE PRO FR	100% ALGODÃO	SARJA 3X1	260,0 G/M ²	11,0 CAL/CM ²	78%	2
SATURNO FR	100% ALGODÃO	SARJA 3X1	260,0 G/CM ²	9,6 CAL/CM ²	77,11%t	2
VÊNUS FR	88% ALGODÃO 12% POLIAMIDA	SARJA 3X1	230,0 G/CM ²	8,2 CAL/CM ²	72,69%	2
MALHA STYLE 0130	88% ALGODÃO 12% NYLON	INTERLOCK KNIT	220,0 G/CM ²	14,0 CAL/CM ²	85,25%	2
UNIPOWER METAL LÍQUIDO	100% ALGODÃO	SARJA 3X1	414,0 G/M ²	18 CAL/CM ²	84%	2

*Nível de risco segundo a NFPA 70E ** Percentual queima 2º e 3º grau segundo a NFPA 2112

Variação faixa - peças RC Metal Líquido

camisa, calça, jaleco, guarda pó, jaqueta, macacão

 faixa 2,5 cm

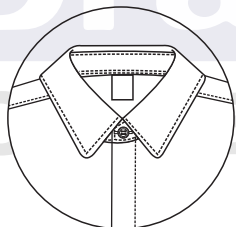
 faixa 5,0 cm

 faixa 5,0/2,5 cm

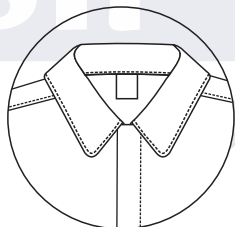
 faixa 5,0/2,5 cm

Variações Modelos RC, Metal Líquido

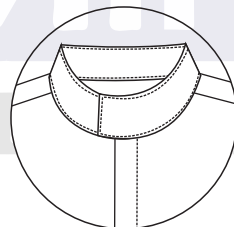
Variação gola



gola colarinho

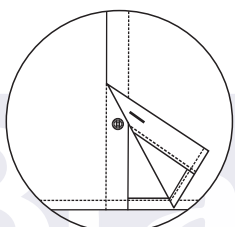


gola esporte

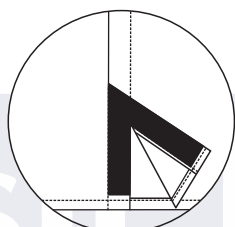


gola padre
transpassada

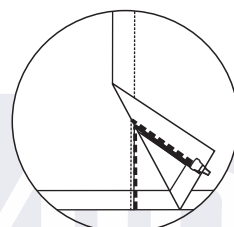
Variação fechamento frontal



fechamento por
botões embutidos

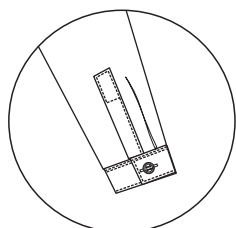


fechamento
por velcro

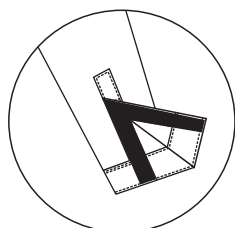


fechamento por
zíper embutido

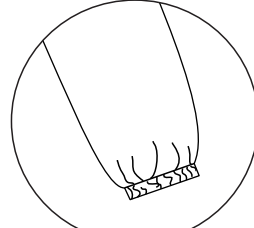
Variação punho das mangas



punho/ carcela/
prega/botão

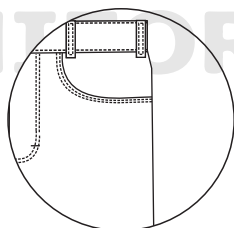


punho/ carcela/
velcro

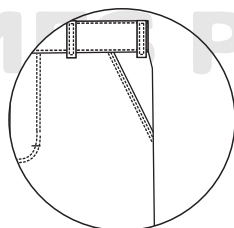


punho elástico

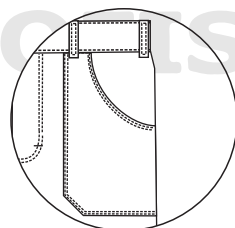
Variação bolsos



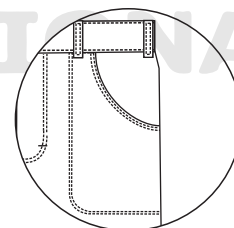
bolso tradicional



bolso faca



bolso americano



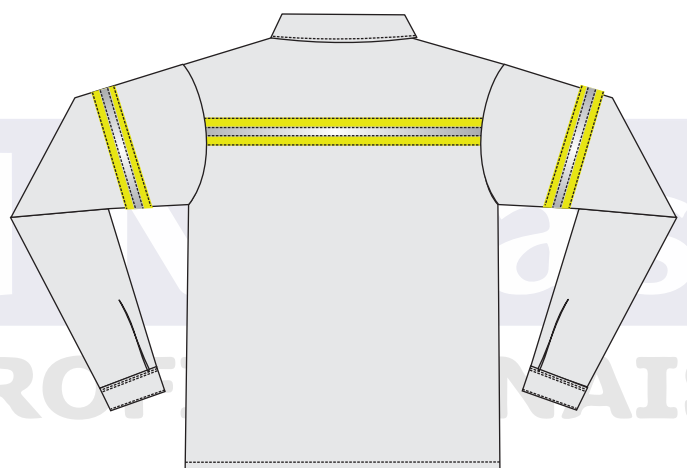
bolso rebatido

Uniformes **Operacionais**

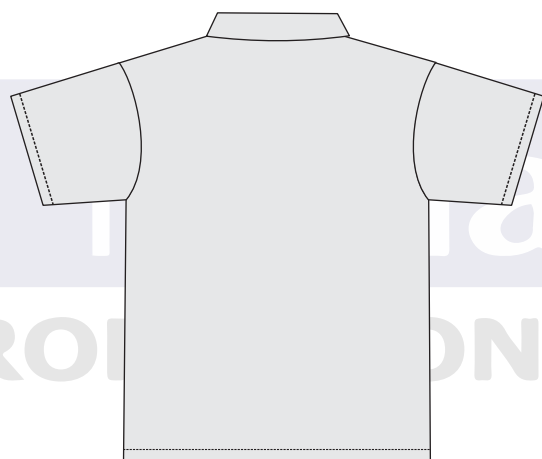
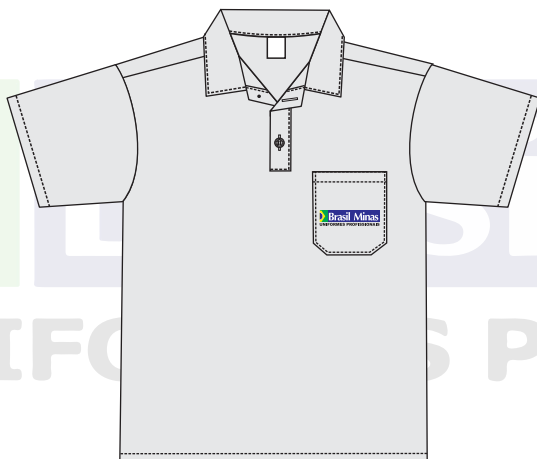




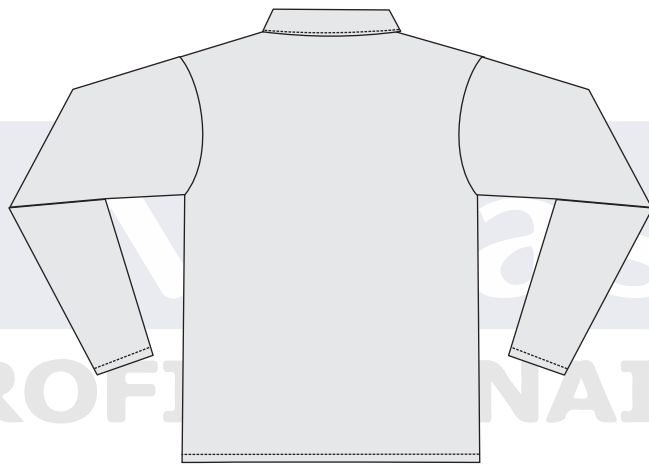
UP 101 - CAMISA MANGA CURTA



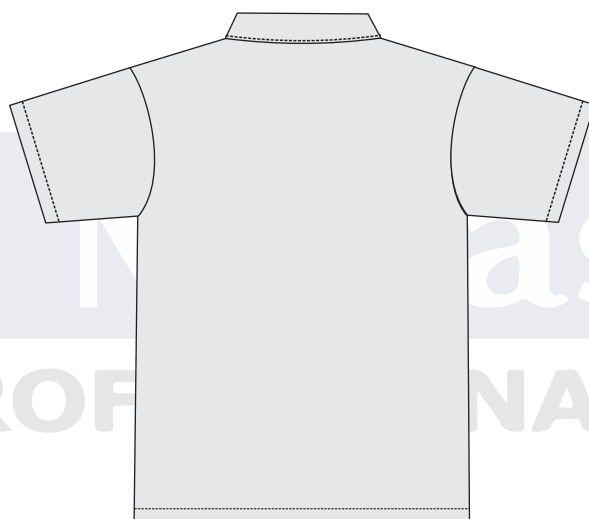
UP 102 - CAMISA MANGA LONGA



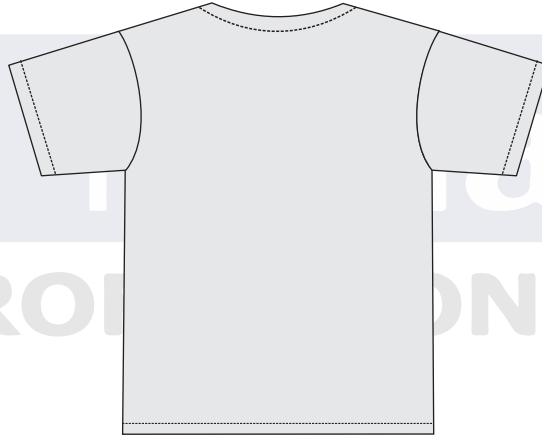
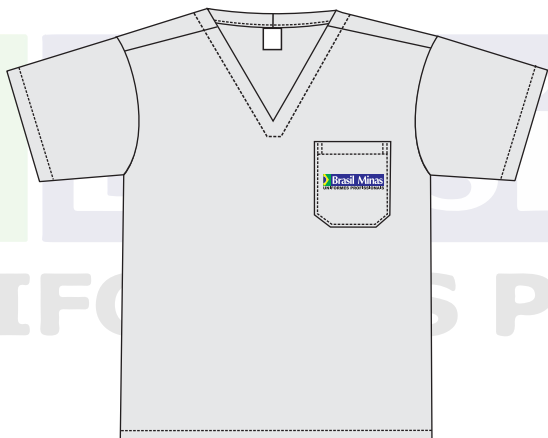
UP 104 - CAMISA FECHADA, MANGA CURTA



UP 105 - CAMISA FECHADA, MANGA LONGA

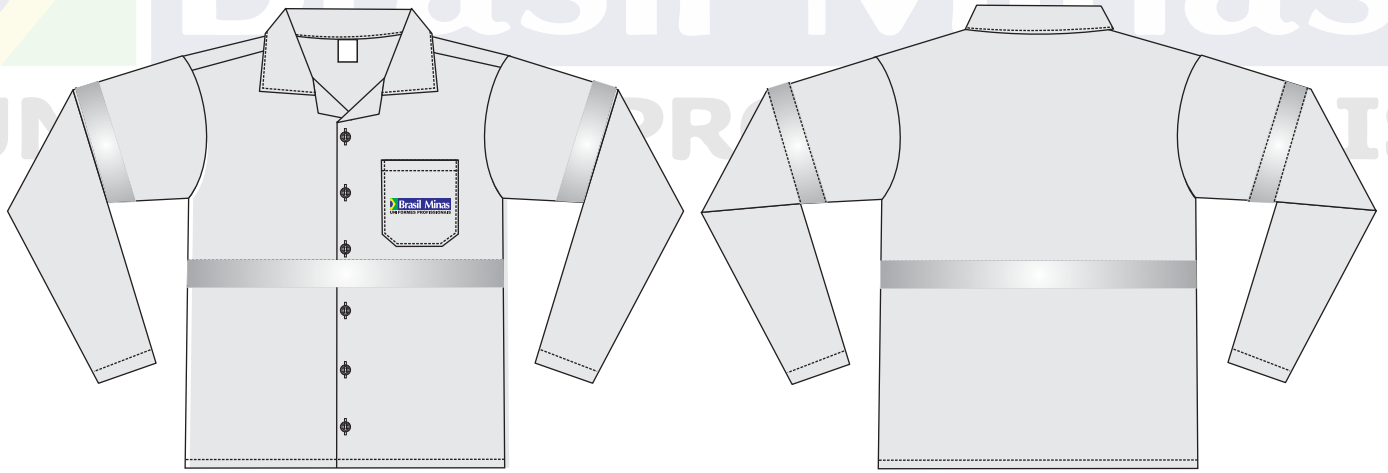


UP 106 - CAMISA MANGA CURTA



UP 107 - CAMISA FECHADA, MANGA CURTA

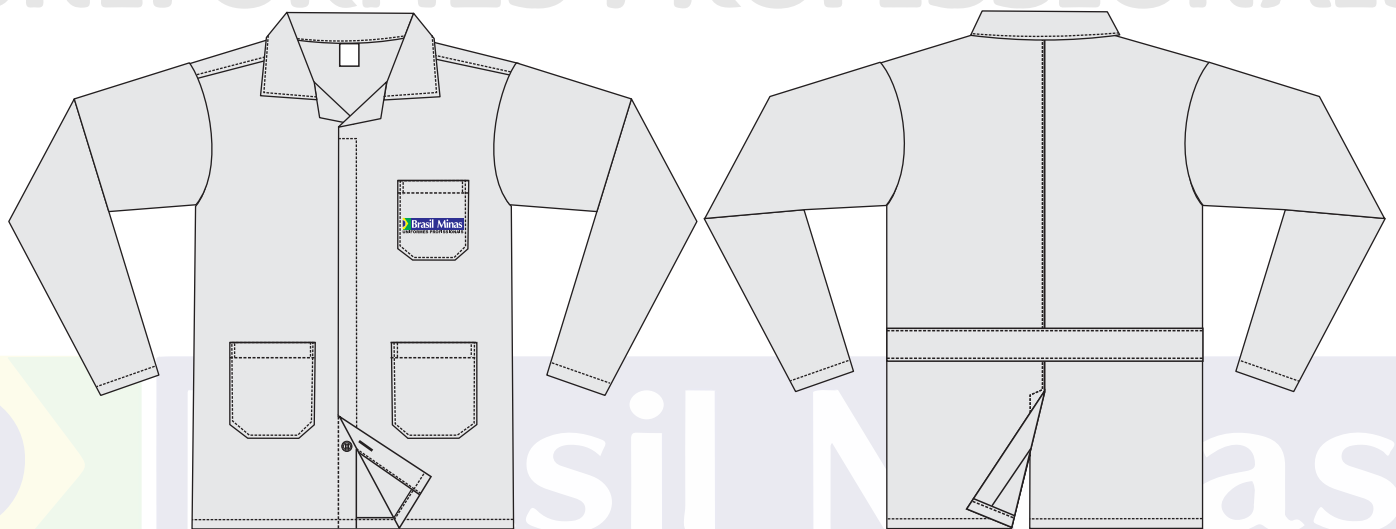
Brasil Minas



UP 112 - CAMISA MANGA LONGA

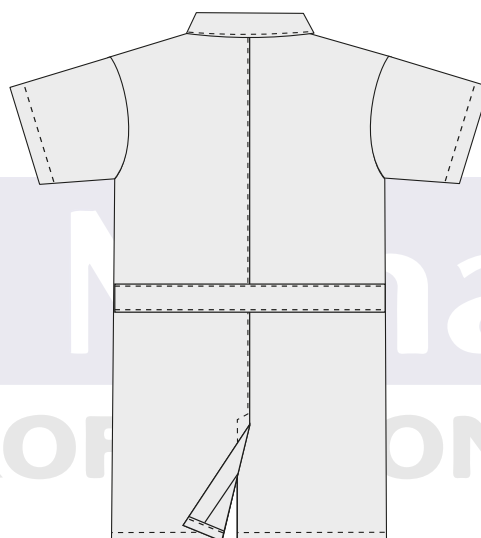
Brasil Minas

UNIFORMES PROFISSIONAIS

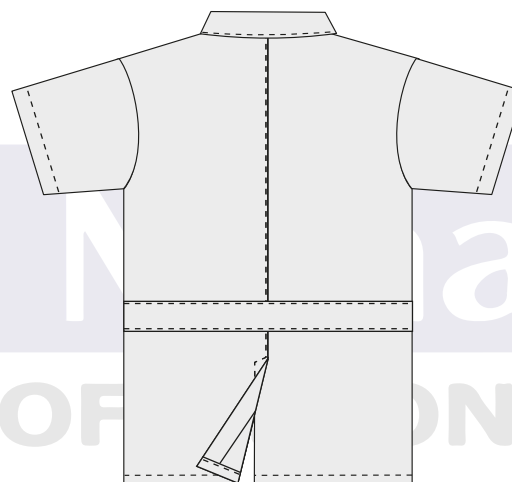


UP 204 - GUARDA-PÓ 3/4 MANGA LONGA

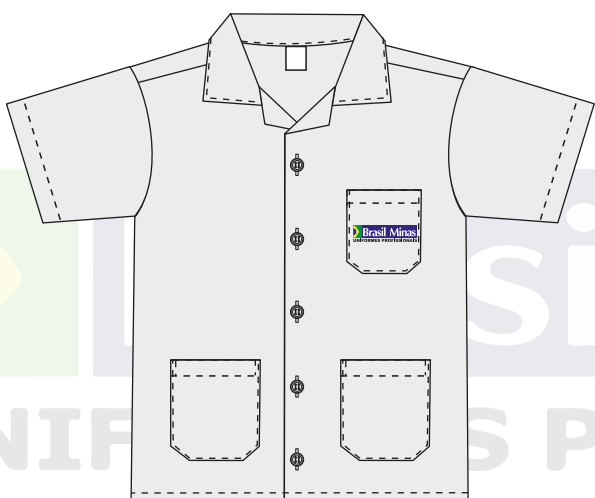
UNIFORMES PROFISSIONAIS



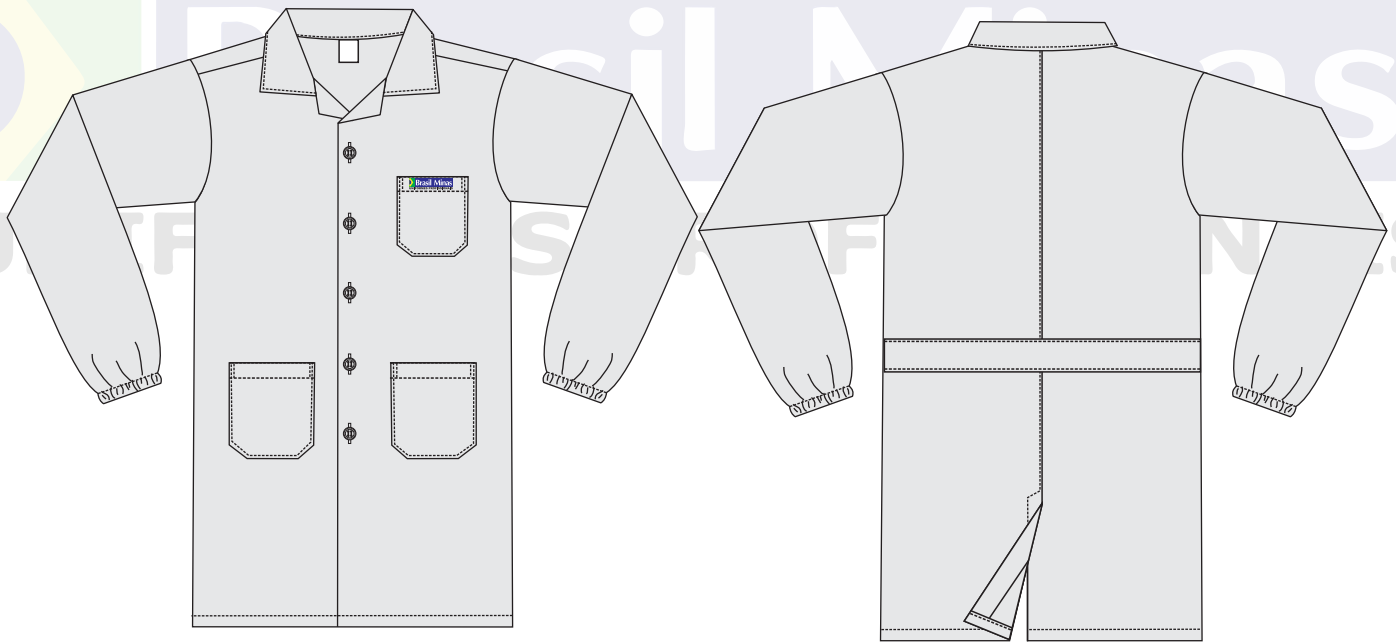
OP 201 - GUARDA PÓ 5/8 (ALTURA PANTURRILHA) MANGA CURTA



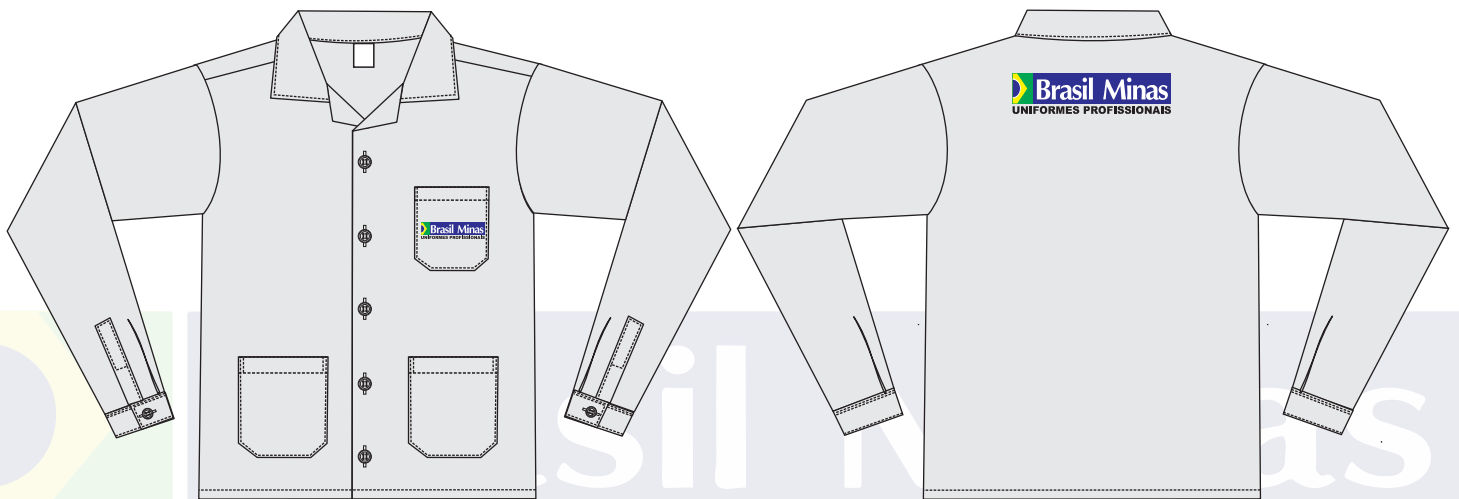
OP 203 - GUARDA PÓ 3/4 (ALTURA DA COXA) MANGA CURTA



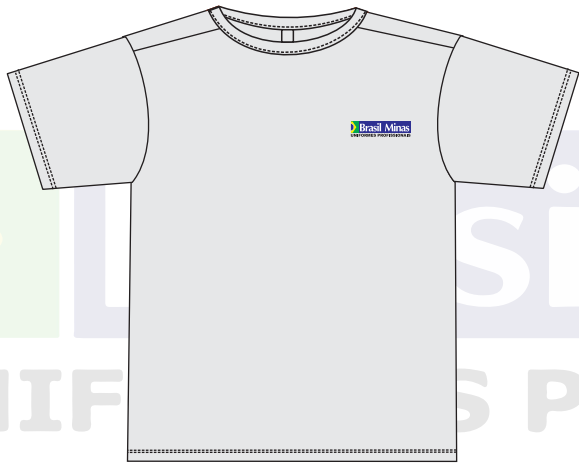
OP 401 - JALECO MANGA CURTA (TIPO CAMISA)



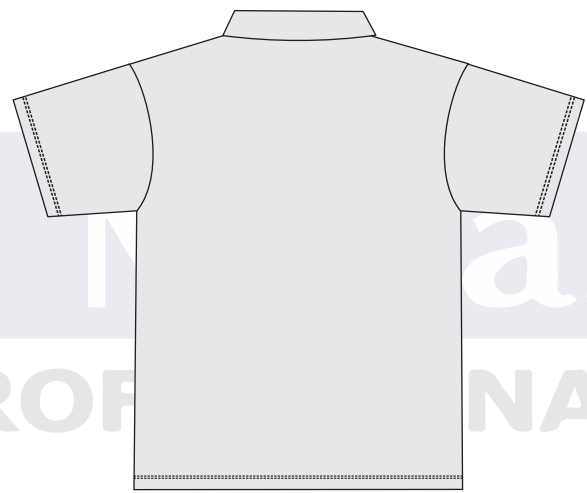
UP 205 - GUARDA-PÓ 5/8 MANGA LONGA



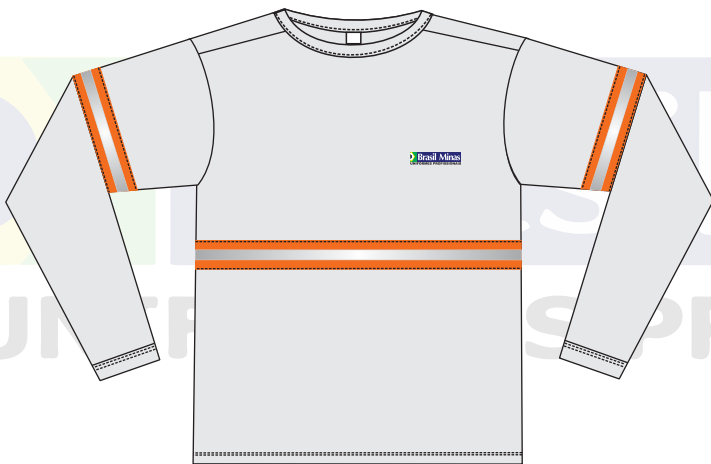
UP 402 - JALECO MANGA LONGA (TIPO CAMISA)



CM 104 - CAMISA DE MALHA FECHADA, MANGA CURTA



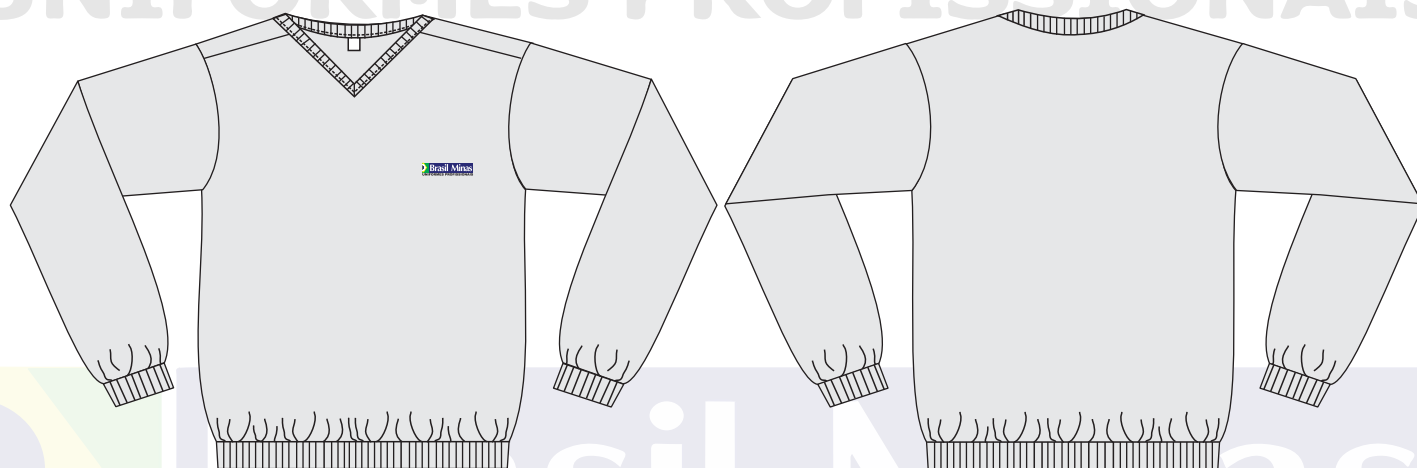
CM 119 - CAMISA POLO, MANGA CURTA



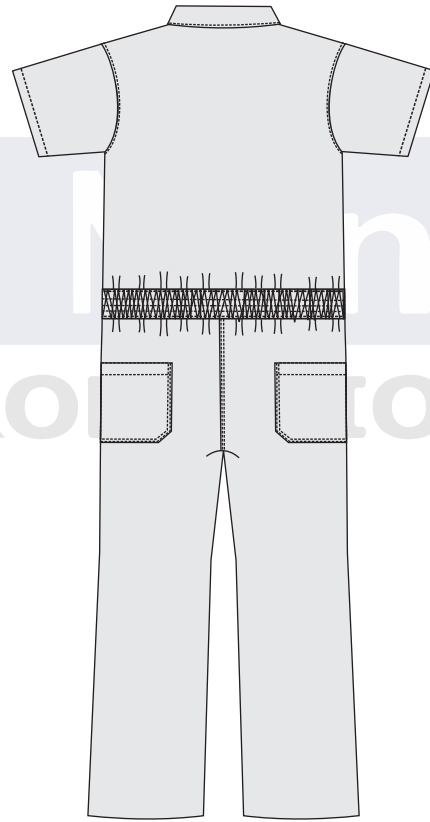
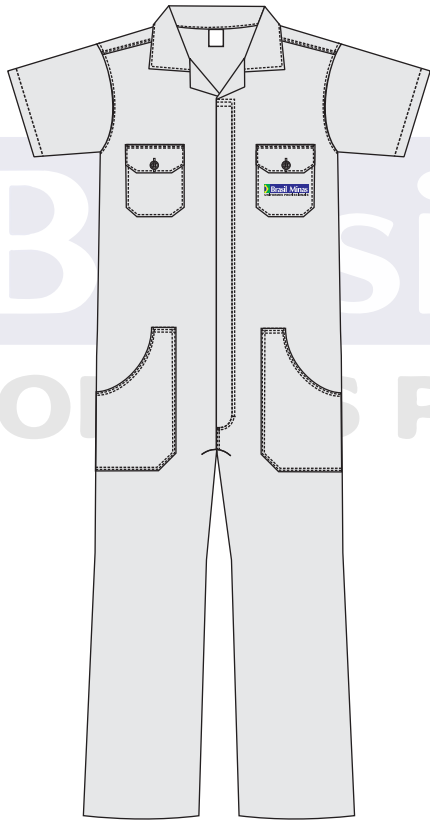
CM 120 - CAMISA DE MALHA, MANGA LONGA



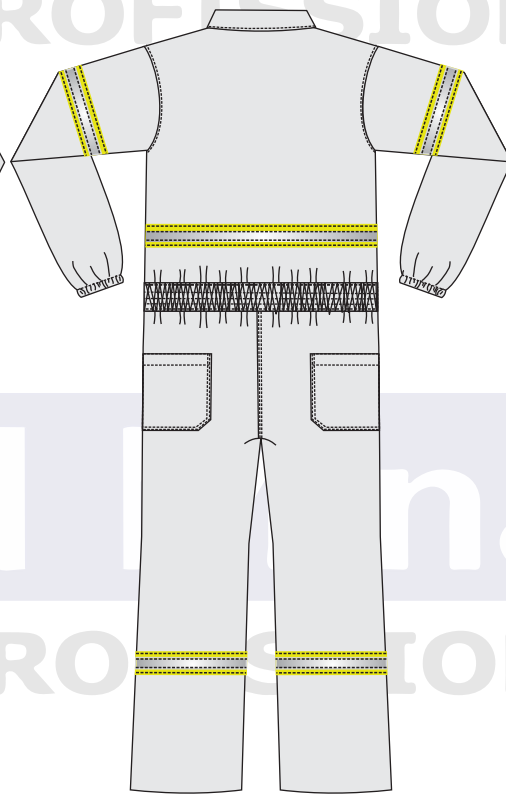
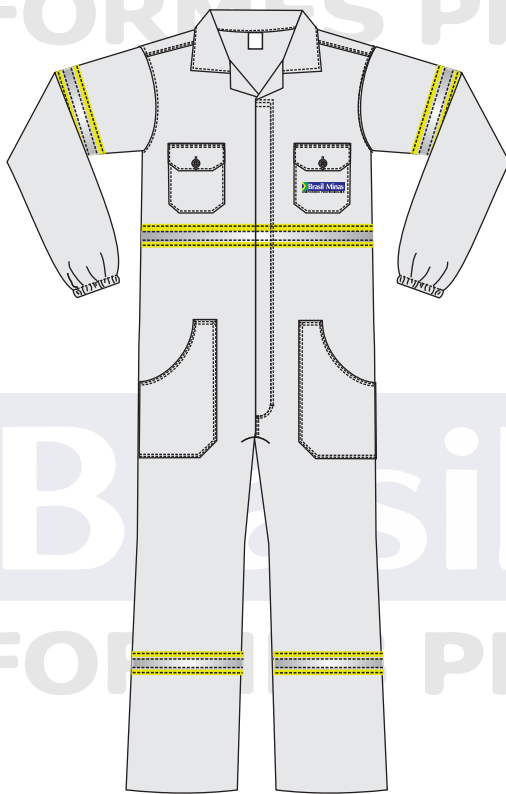
CM 125 - BABY LOOK POLO, MANGA CURTA



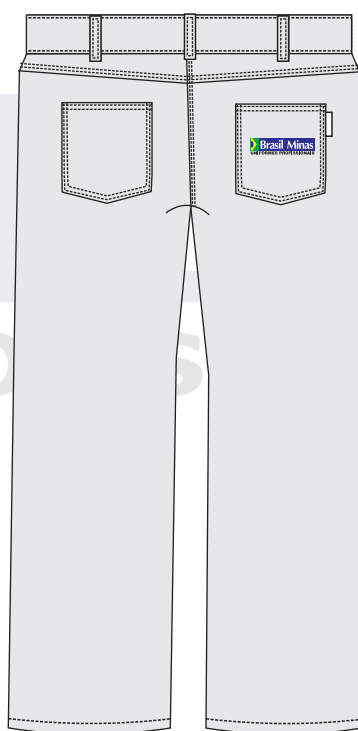
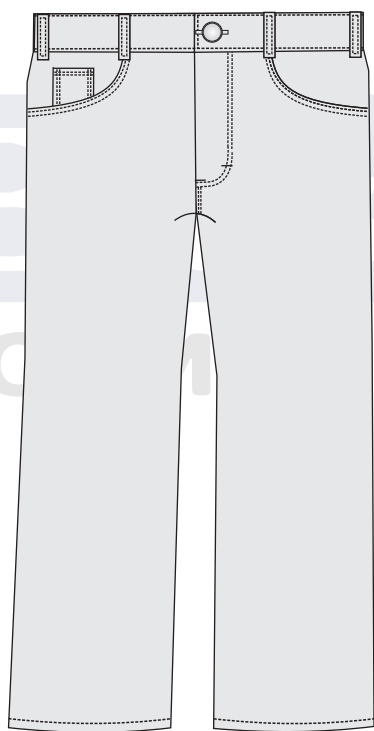
AG 109 - MOLETOM UNISSEX



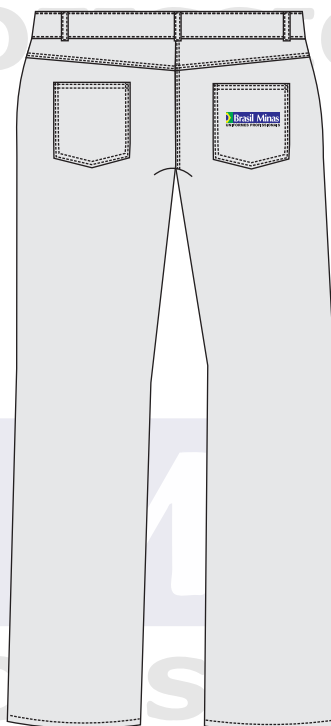
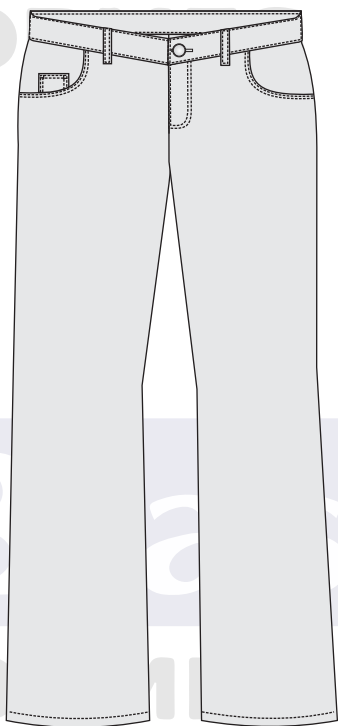
MAC 005 - MACACÃO MANGA CURTA



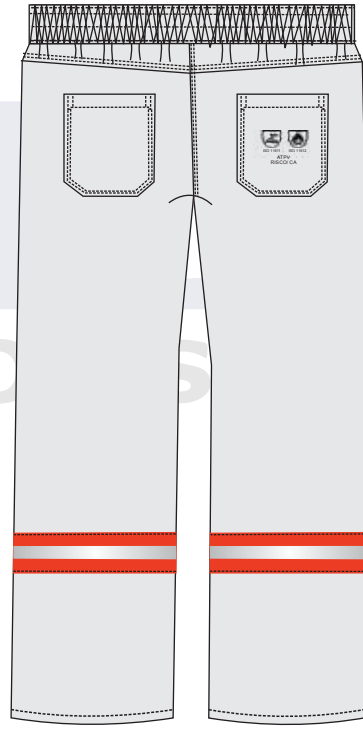
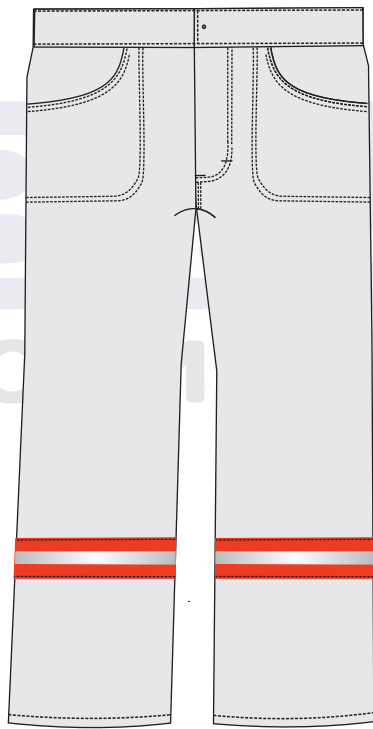
MAC 007 - MACACÃO MANGA LONGA



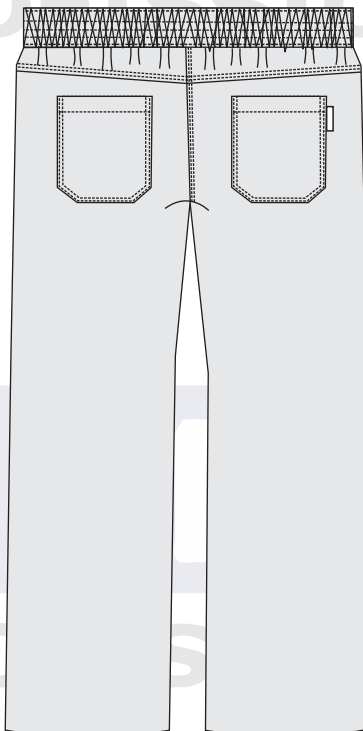
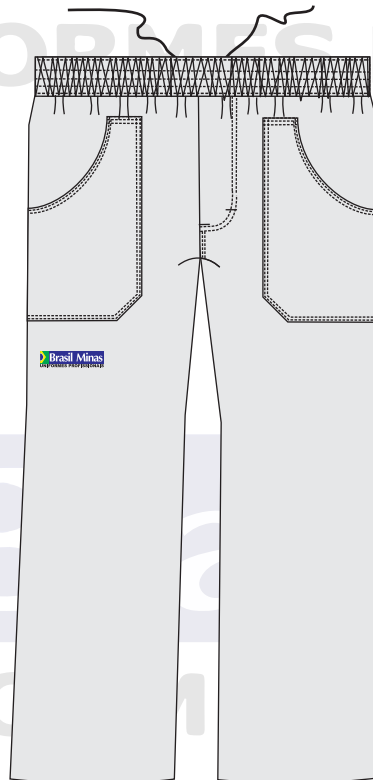
CAL 001 - CALÇA TRADICIONAL MASCULINA



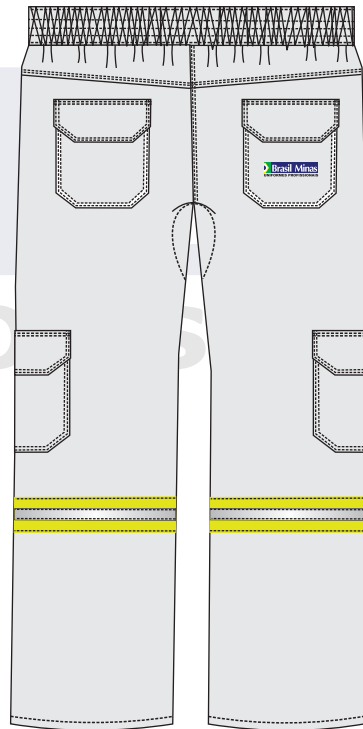
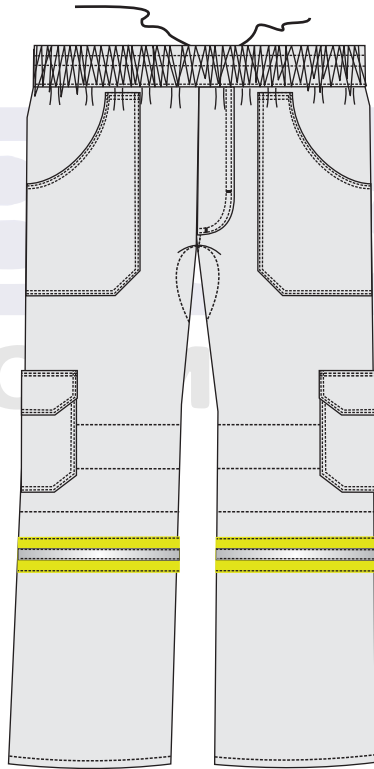
CAL 002 - CALÇA TRADICIONAL FEMININA



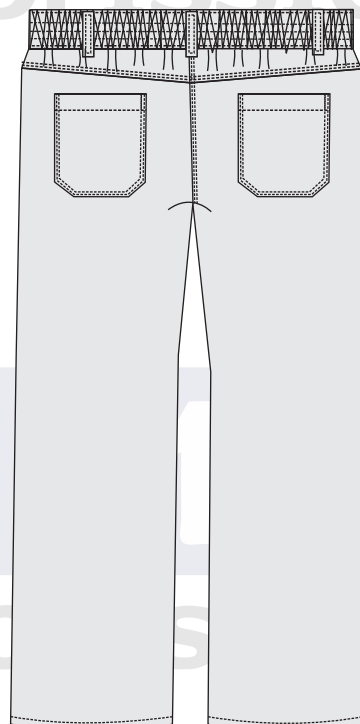
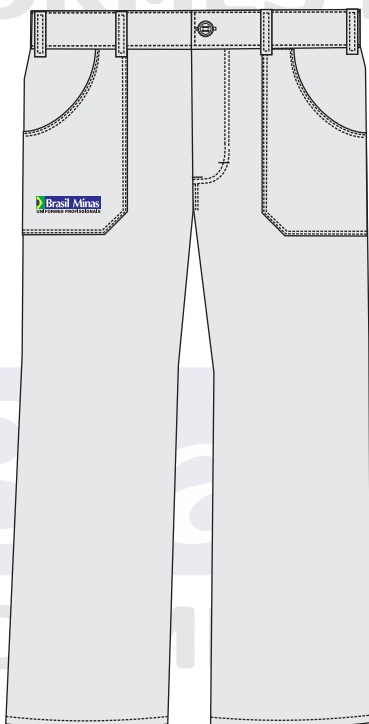
CAL 005 - CALÇA TRADICIONAL BOLSO REBATIDO



CAL 007 - CALÇA CÓS ELÁSTICO TOTAL



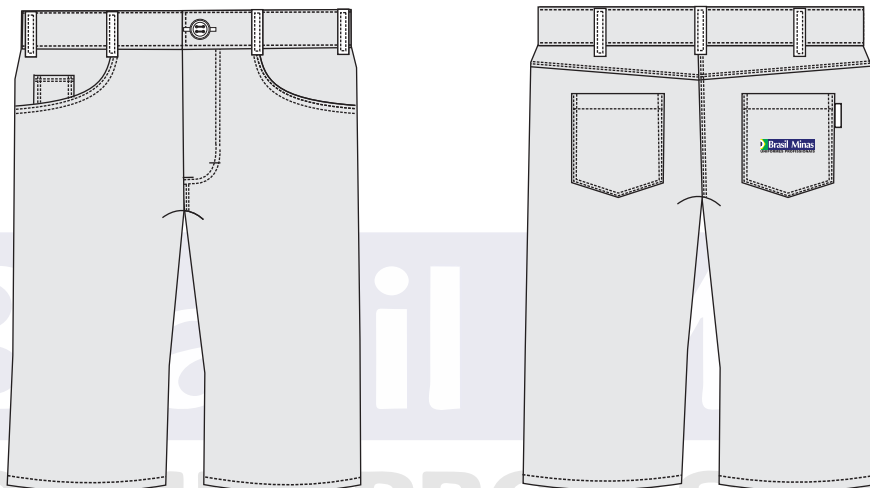
CAL 008 - CALÇA CARGO CÓS ELÁSTICO



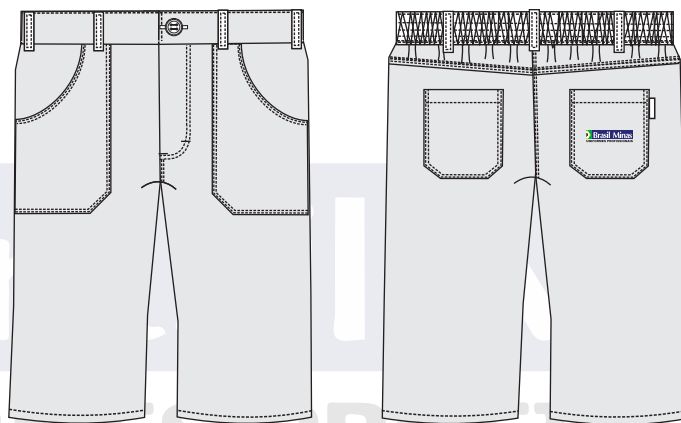
CAL 009 - CALÇA CÓS 1/2 ELÁSTICO



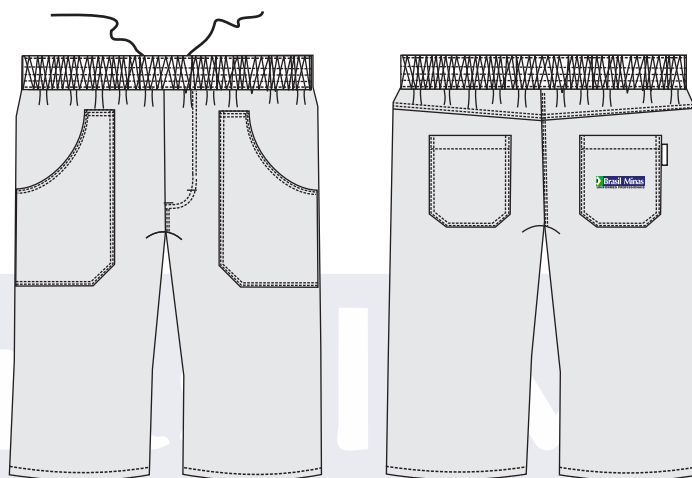
CAL 011 - CALÇA GESTANTE (HELANCA NO CÓS)



BER 015 - BERMUDA TRADICIONAL MASCULINA



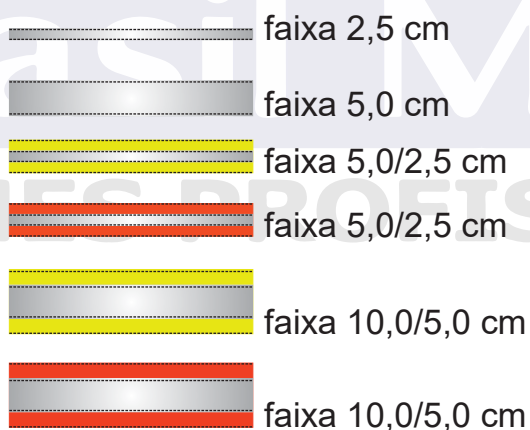
BER 016 - BERMUDA CÓS 1/2 ELÁSTICO



BER 017 - BERMUDA CÓS ELÁSTICO

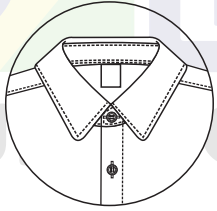
Variação faixa - peças operacionais

camisa, calça, jaleco, guarda pó, jaqueta, macacão

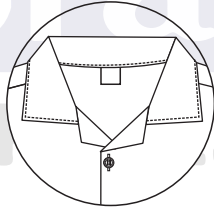


Variações Modelos Operacionais

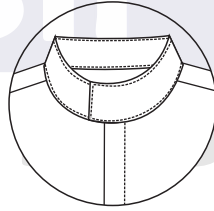
Variação gola



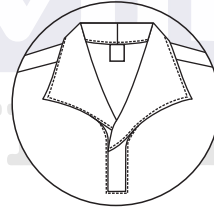
gola colarinho



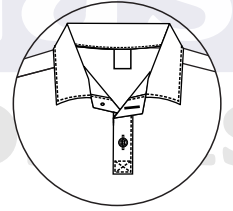
gola esporte



gola padre
transpassada

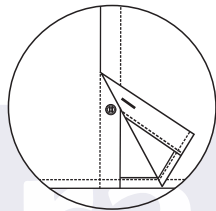


gola italiana

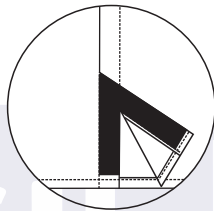


gola esporte
com carcela

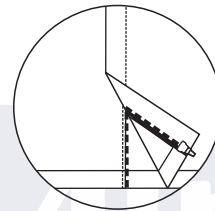
Variação fechamento frontal



fechamento por
botões embutidos

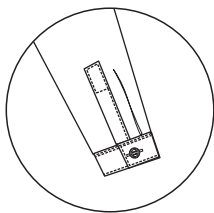


fechamento
por velcro

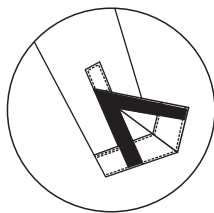


fechamento por
zíper embutido

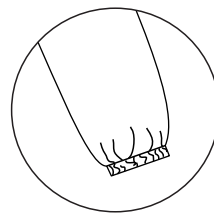
Variação punho das mangas



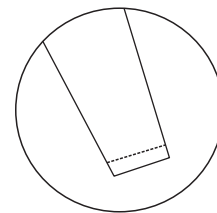
punho/ carcela/
prega/botão



punho/ carcela/
velcro

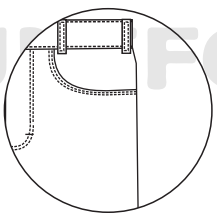


punho elástico

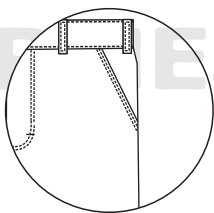


punho canhão

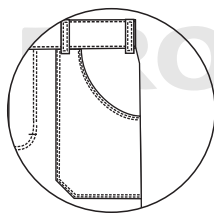
Variação bolsos



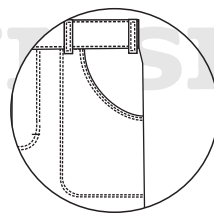
bolso tradicional



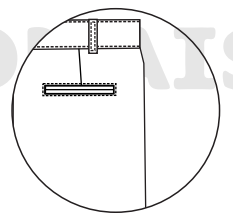
bolso faca



bolso americano



bolso rebatido

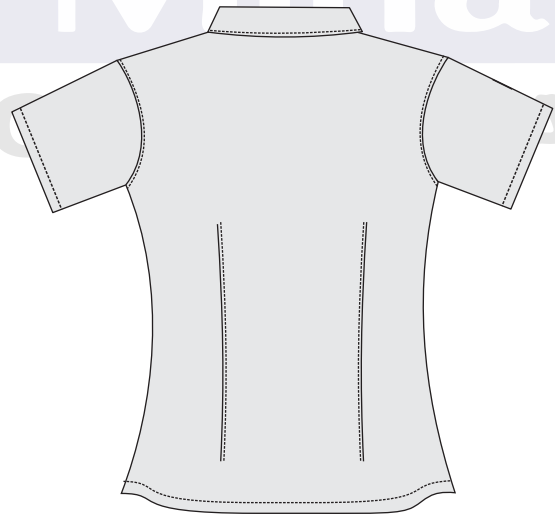


bolso embutido

Uniformes **Administrativos**



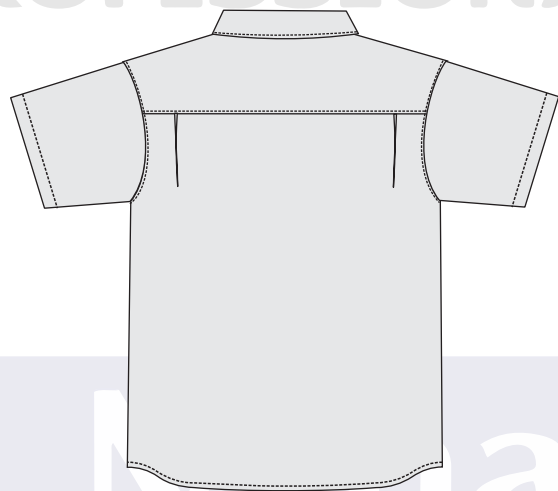
Brasil Minas



ADM 100 - CAMISETE SOCIAL MANGA CURTA

Brasil Minas

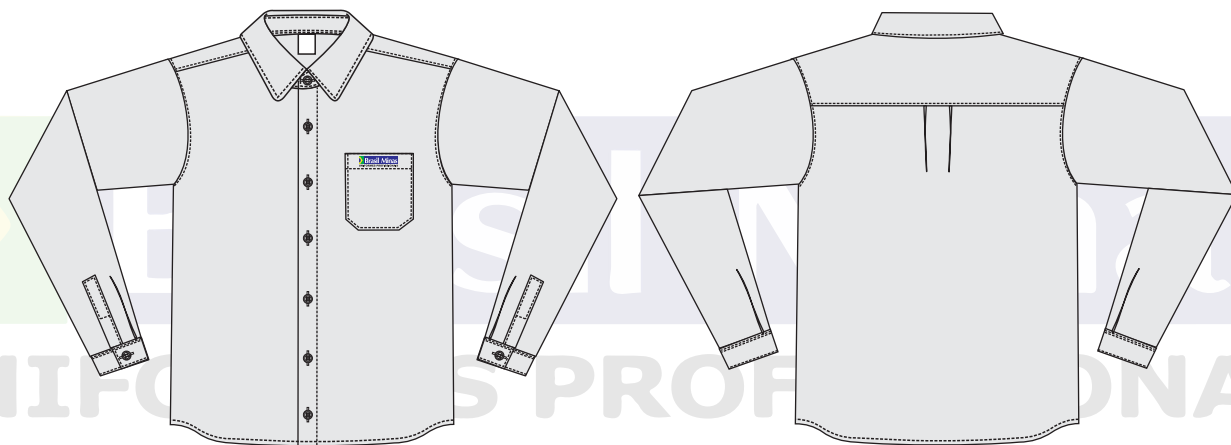
UNIFORMES PROFISSIONAIS



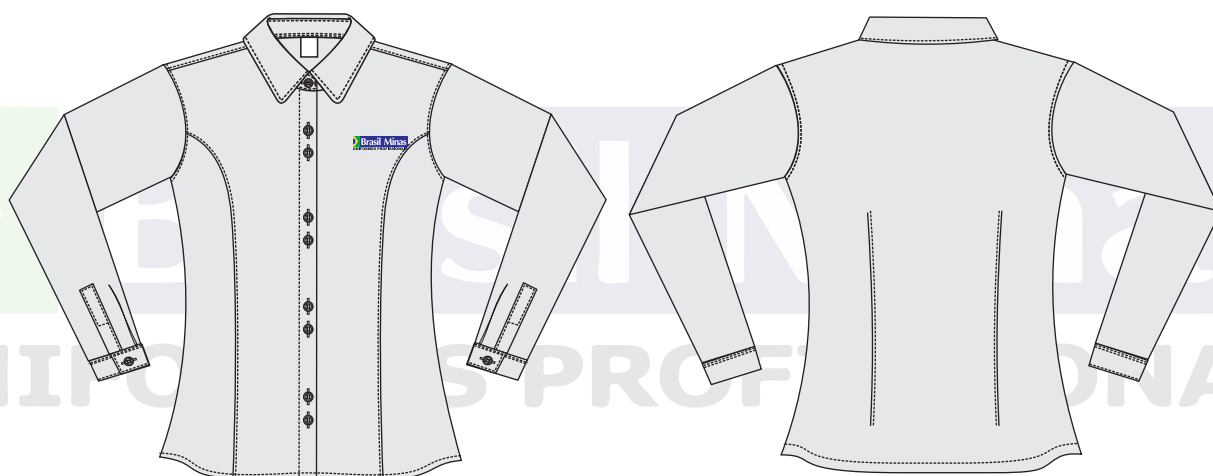
ADM 105 - CAMISA SOCIAL MANGA CURTA

Brasil Minas

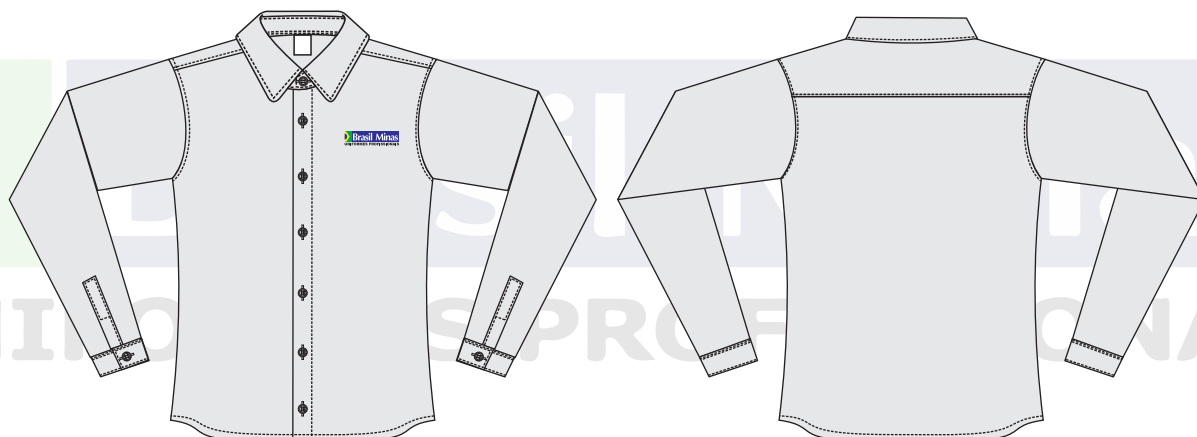
UNIFORMES PROFISSIONAIS



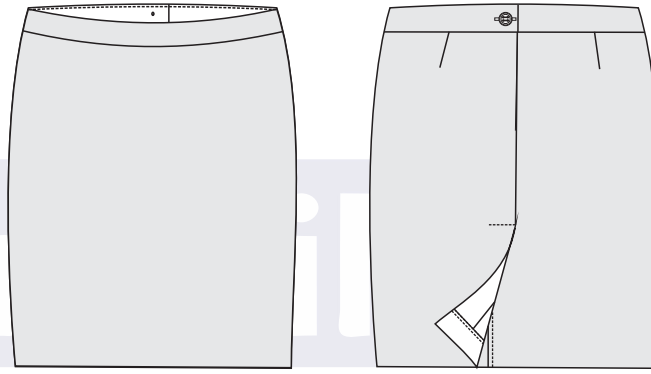
ADM 106 - CAMISA SOCIAL MANGA LONGA



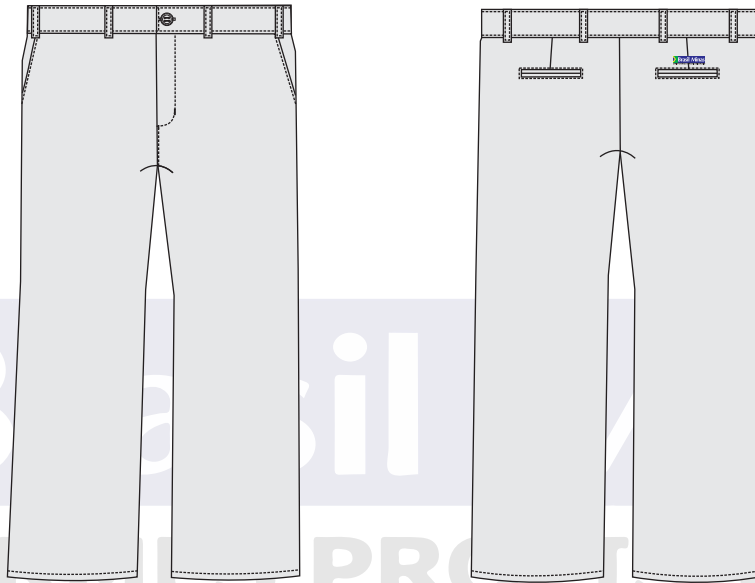
ADM 110 - CAMISETE SOCIAL MANGA LONGA



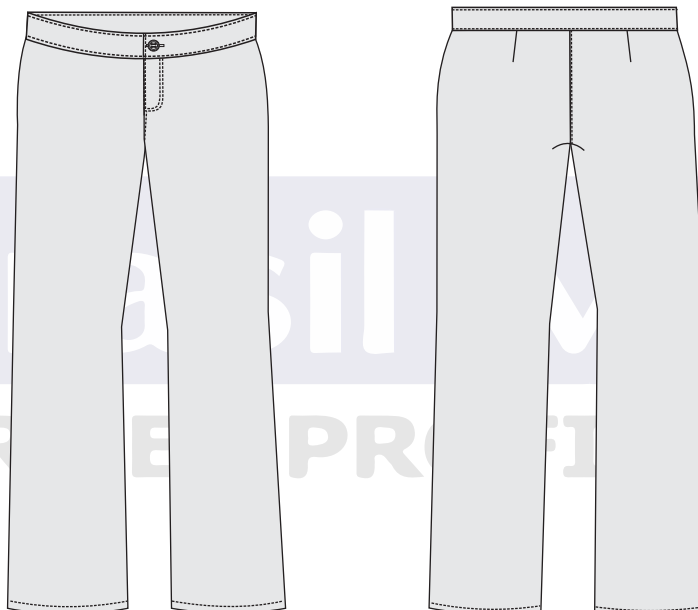
ADM 122 - CAMISA SLIM MANGA LONGA



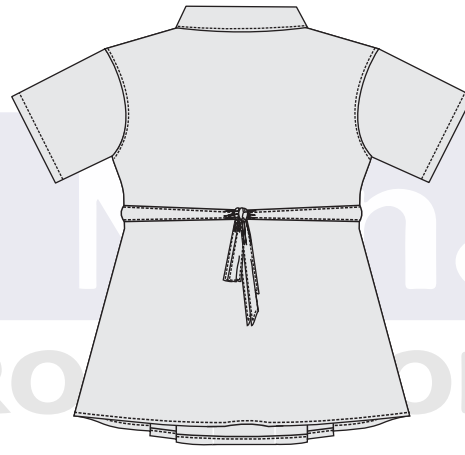
SAI 400 - SAIA SOCIAL



CAL 003 - CALÇA SOCIAL MASCULINA



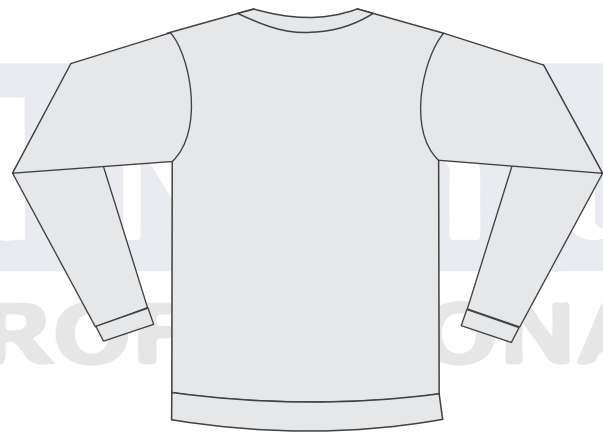
CAL 004 - CALÇA SOCIAL FEMININA



ADM 130 - BATA GESTANTE MANGA CURTA



ADM 131 - CAMISETE SLIM MANGA LONGA

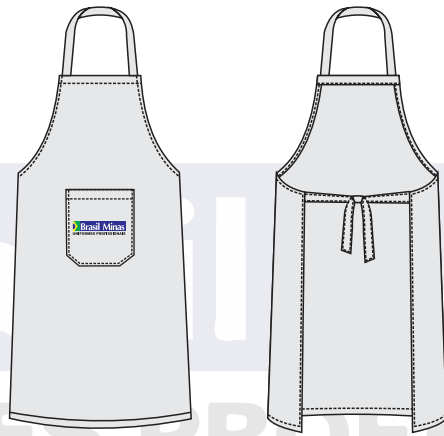


AG 108 - SUÉTER UNISSEX

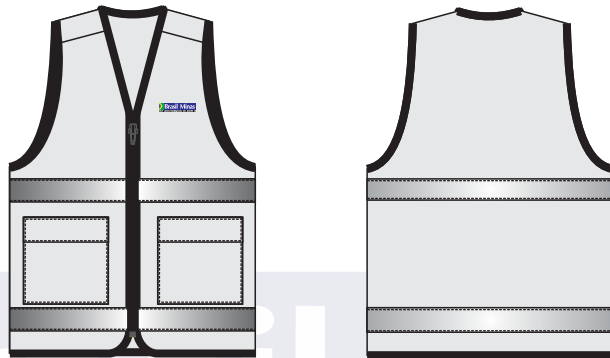
Uniformes

Avental e Coletes

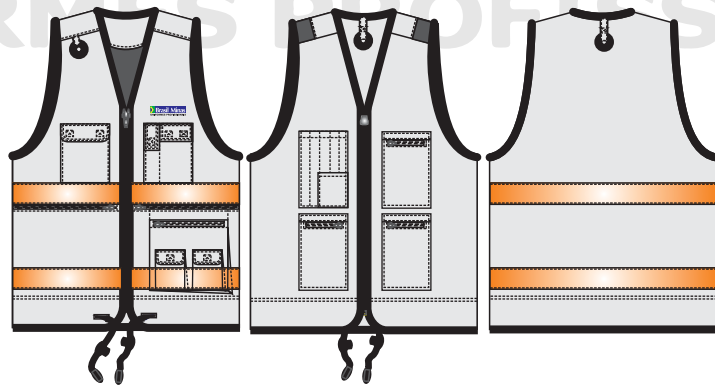




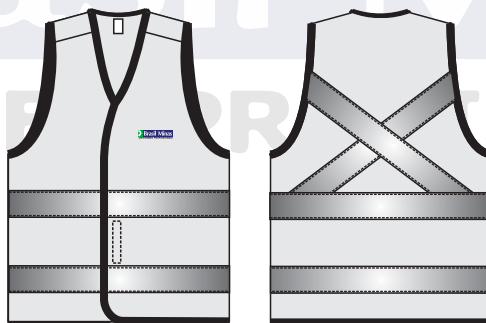
AV 600 - AVENTAL FRENTE ÚNICA 80 x 60 cm



COL 600 - COLETE



COL 601 - COLETE COM BOLSO INTERNO

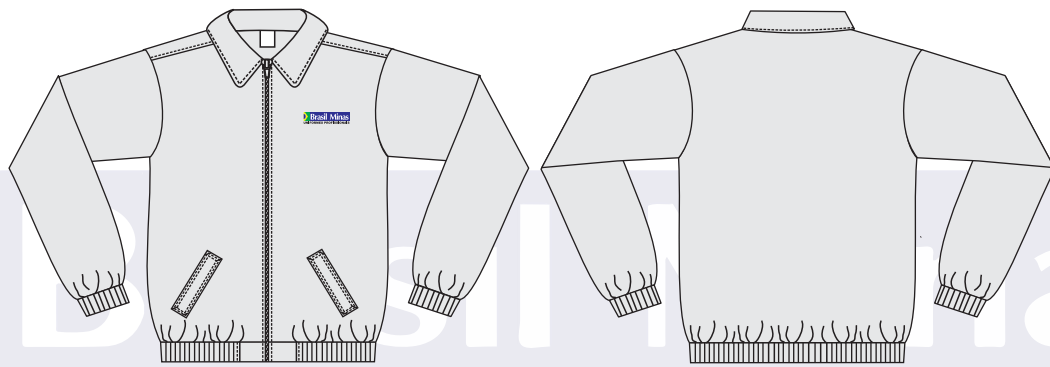


COL 602 - FX COLETE

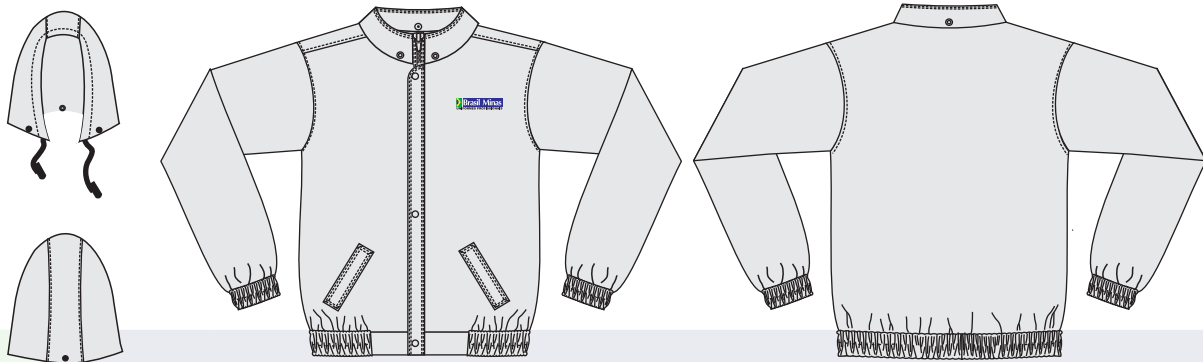
Uniformes

Jaquetas

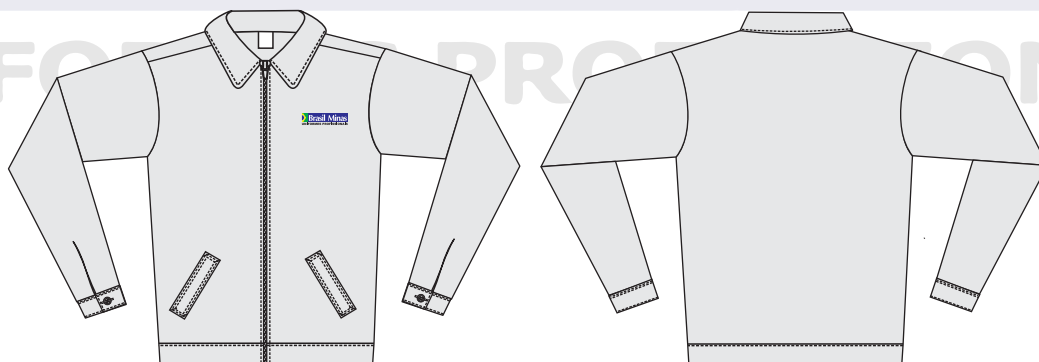




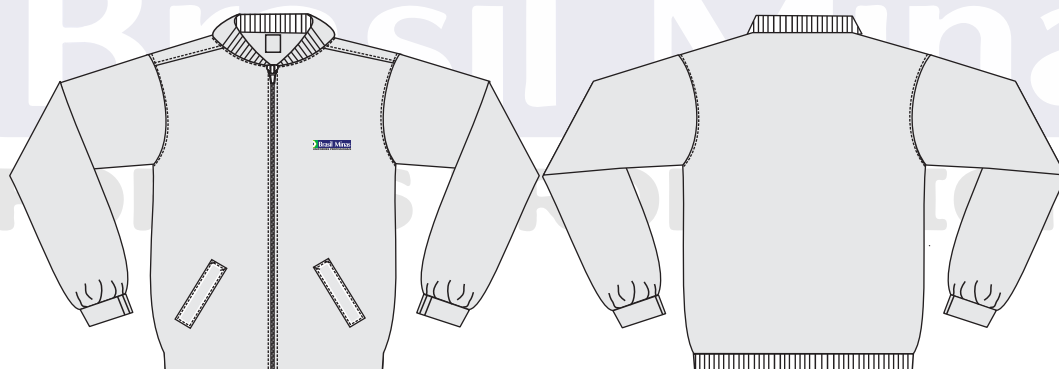
JAQ 500 - JAQUETA



JAQ 501 - JAQUETA COM CAPUZ REMOVÍVEL



JAQ 502 - JAQUETA



JAQ 503 - JAQUETA

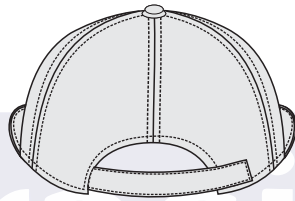
Uniformes

Bonés e Toucas

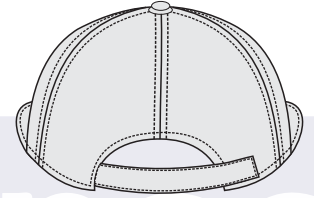




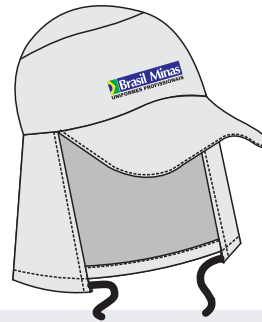
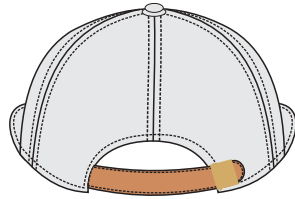
BO 300 - BONÉ JAPONÊS



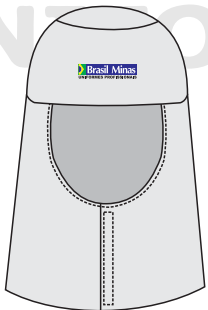
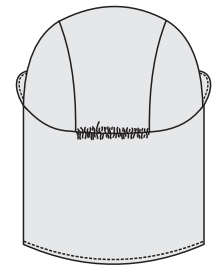
BO 301 - BONÉ AMERICANO



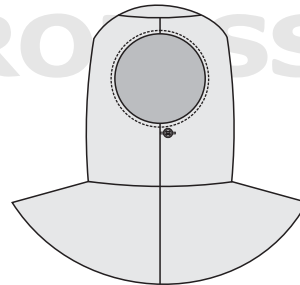
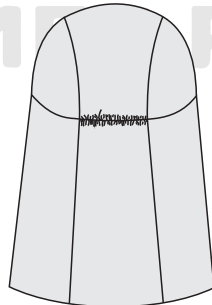
BO 302 - BONÉ ITALIANO



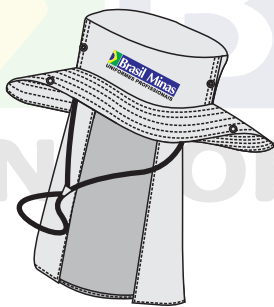
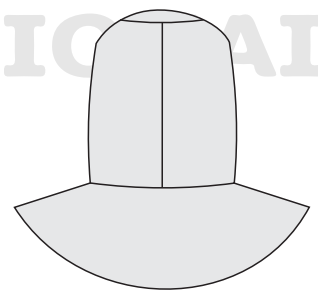
CA 303 - CAPUZ COM ABA



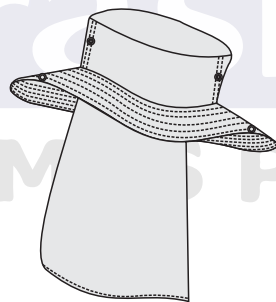
CA 304 - CAPUZ



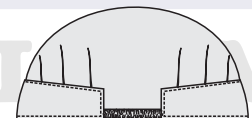
CA 305 - CAPUZ COM PROTEÇÃO DE OMBRO



CA 307 - CHAPÉU CANADENSE COM PROTEÇÃO DE PESCOÇO



CA 308 - TOUCA



Alguns dos nossos Parceiros



Contatos

Endereço: Av. Castro Alves, 2605 | Várzea da Olaria
35680-095 - Itaúna - MG

Email: vendas@brasilminasuniformes.com.br

Site: www.brasilminasuniformes.com.br

Telefone: (37) 3249-5050

