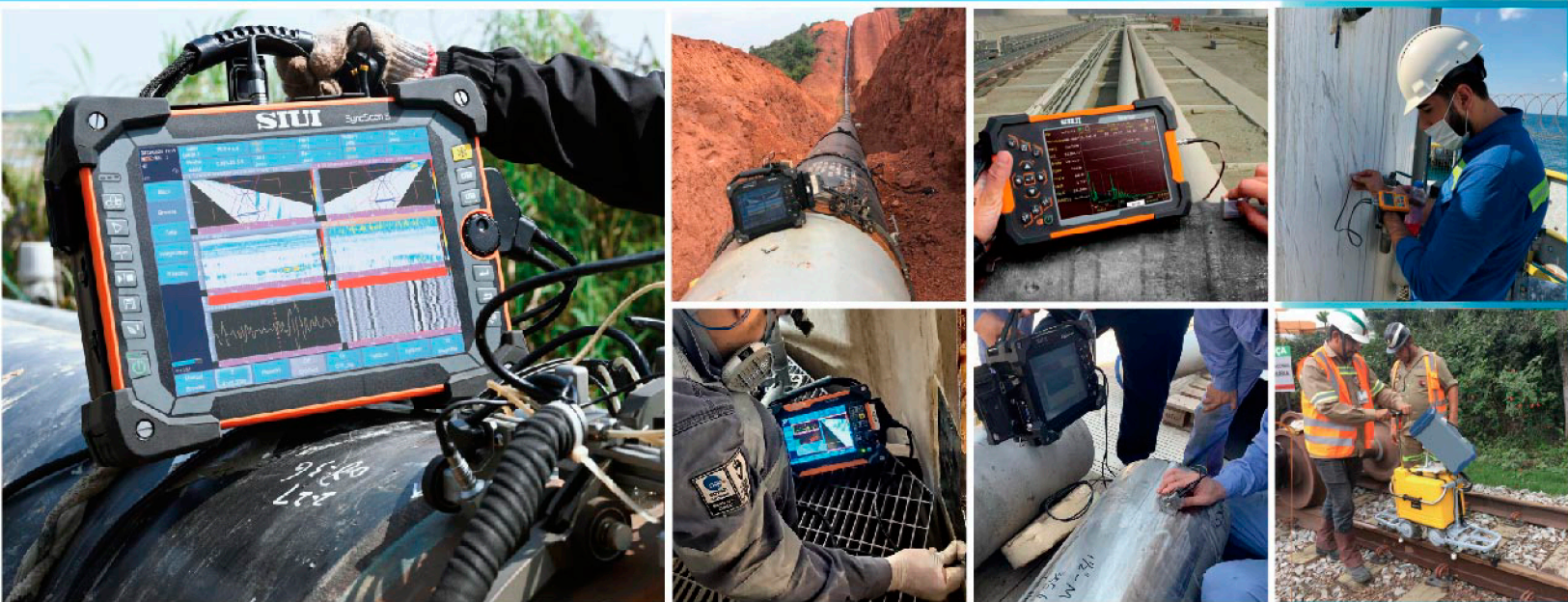


Industrial Ultrasonic Products



- ✓ Phased Array & TOFD Flaw Detector
- ✓ Ultrasonic Flaw Detector
- ✓ Ultrasonic Thickness Gauge
- ✓ Ultrasonic Rail Flaw Detector
- ✓ Multi-Channel Ultrasonic Flaw Detector
- ✓ PC Analysis Software
- ✓ Crawlers & Probes & Accessories

INTERMETRO
SIUI



Phased Array Flaw Detector with TFM

SyncScan 3

More Possibilities for Demanding Inspection



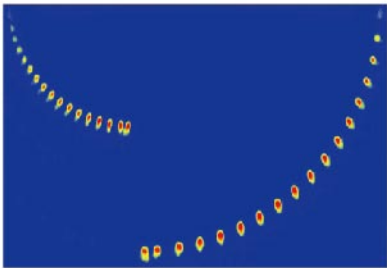
SyncScan 3 is 64:128PR PAUT flaw detector with total focusing method (TFM) and 4-ch TOFD, which brings more possibilities for demanding inspections in oil & gas, power industries, etc.

Main Specifications

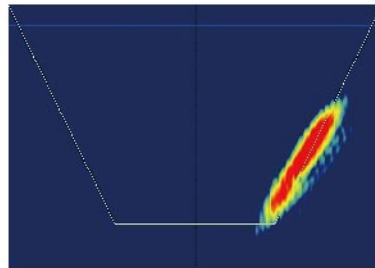
- IP 65
- 6kg with battery
- Dimension (W×H×D): 365×270×115 (mm)
- 12.1" TFT LCD touch screen, 1024x768 pixels
- Faster scan speed (Approximately 7 meters/minute)

Superior Features

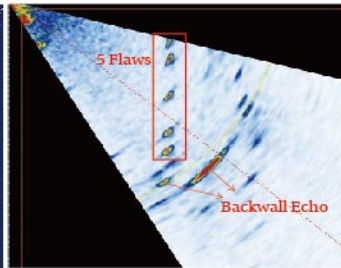
- TFM image resolution up to 1024×1024.
- Support raw FMC data recorded, no need to re-scan.
- 64-ch PA with higher sensitivity and SNR, ideal for ≥ 100 mm thick welds.
- Compatible with SyncScan 2 files, convenient for user's operation.



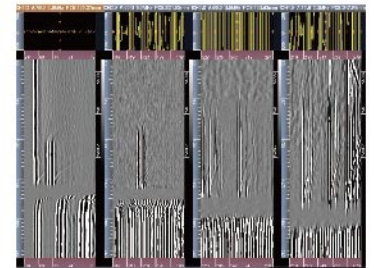
TFM for PA block type B



TFM for no-fusion defect



64-ch PA for 168mm thickness



4-ch TOFD for 200mm thickness



High-end Phased Array & TOFD Flaw Detector

SyncScan 2

Maximize your efficiency for Phased Array & TOFD



SyncScan 2 is a 32:128PR PAUT flaw detector with optional 2-ch TOFD, which can maximize your efficiency for PA and TOFD.

Main Specifications

- IP 65
- 4kg with battery
- Dimension (W×H×D): 284×220×105 (mm)
- 8.4" TFT LCD touch screen, 800x600 pixels
- Fast scan speed (Approximately 3 meters/minute)

Superior Features

- 1 or 2 ch-TOFD for your selection by license activation.
- 32-channel PA is more suitable for inspection on extra-thick wall and high-attenuation material.
- 32-channel PA and 2-channel TOFD work simultaneously on pressure vessel inspection.
- TOFD can measure thickness up to 100mm.
- Support pitch and catch (PR) mode, corrosion inspection with dual linear/matrix array probe.



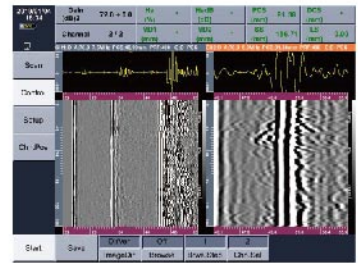
Various weld types for different on-site application.



Real-time coupling monitoring for PA long pipe solution.



Free 2D corrosion for simplified operation.



2 ch-TOFD for thick workpiece.



Pipe weld inspection



Austenitic weld inspection

Versatile Ultrasonic Flaw Detector

SyncScan

Minimize your cost for Phased Array & TOFD



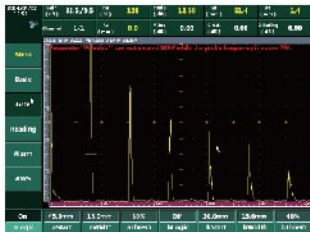
SyncScan incorporates PAUT, TOFD and ultrasonic thickness measurement functions into one compact unit, which can minimize your cost for PA and TOFD.

Main Specifications

- IP65
- 3.75 kg with battery
- Dimension (W×H×D): 284×220×90 (mm)
- 8.4" TFT LCD touch screen, 800x600 pixels

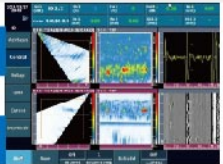
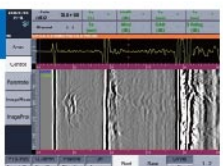
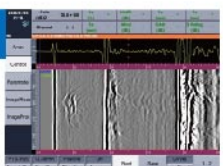
Superior Features

- Smart test wizard guide you step by step from creating your PAUT/ TOFD setups to reports.
- Multiple advanced functions optimises the daily workflow.
- Upgradeable from Conventional UT to PA/ TOFD/ TG.



Conventional UT

- * PR: pitch & catch function.
- * Thickness measurement function is available for all versions.
- * Please define version before purchase.

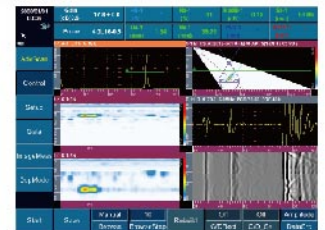
Version 1: upgradeable to 16:128 PAUT + 1-ch TOFD/ UT	
Version 2: upgradeable to 16:64 PAUT(PR) + 1-ch TOFD/ UT	
Version 3: upgradeable to 1/2/4-ch TOFD/ UT	



Friendly calibration wizard guide users for easy setup.



Flat weld solution including various weld types, raytracing capability and overlay help to locate the flaw position visually.



Simultaneous inspection of PAUT and TOFD can decrease undetected rate.



Tube weld inspection



PA corrosion solution

Ultrasonic Flaw Detector & Thickness Gauge

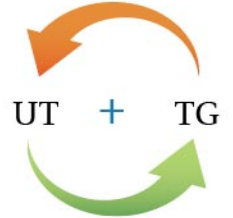
Smartor



Version 1: Ultrasonic Testing



Version 2: Thickness Gauge



Wrist strap for one-hand operation



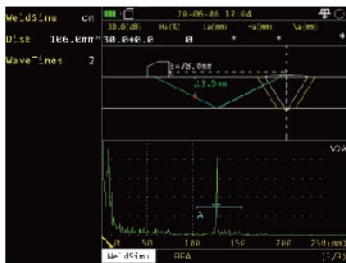
Back strap to free hands

Main Specifications

- IP 66
- 0.9kg with battery
- Dimension (W×H×D): 198×128×52 (mm)
- 5.7" TFT LCD, 640x480 pixels

Superior Features

- Easy to upgrade by on-line license.
- Smart test wizard guides users step by step from calibration to final testing.
- Ultrasonic testing functions: DAC, AGC/DGS, TCG, B-Scan, FFT (probe spectral analysis), CSC (curved surface correction), flat weld simulation, crack height measurement, BEA (backwall echo attenuator), AWS, API 5UE.
- Thickness measurement functions: A-scan thickness measurement (TG ECHO included), dataset management, CoatMode, B-Scan, MultiLayers, Vpath, TDG and temperature compensation.



Flat Weld Simulation including 14 weld types and raytracing capability help to locate the flaw position visually.



Coat and base material thickness can be displayed at the same time.



Ultrasonic weld inspection



Ultrasonic thickness measurement

Portable Ultrasonic Flow Detector

Advanced Model

CTS-9009PLUS CTS-9009

Popular Model

CTS-9006 CTS-9005



- Small Size
- Low Consumption
- High Performance

- Easy Operation
- Multi-Purpose
- Lightweight

Application

It is suitable for inspecting flaw position and size, which can be widely used for various detection demands, such as pipes and tubes, welding lines, pressure vessels and airplane parts.



Ultrasonic Thickness Gauge

Advanced Model

CTS-30C

Popular Model

CTS-30A/B

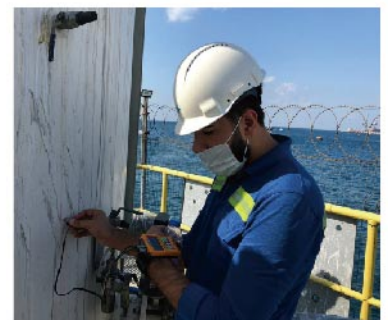


- Multi-probe Selection
- Thru-coating Measurement

- Compact Size
- Light Weight
- Low Consumption
- Long Operation Duration

Application

Machinery, chemical, ship building, aeronautical and aerospace industries.



Ultrasonic Rail Flaw Detector

Rail Version SyncScan



SyncScan (rail version) is suitable for phased array rail weld inspection.

Superior Features

- Compact and Portable
- Rail Testing Wizard
- PA Electronic Scanning
- High defect Inspection Rate
- Wide Coverage and High Efficiency



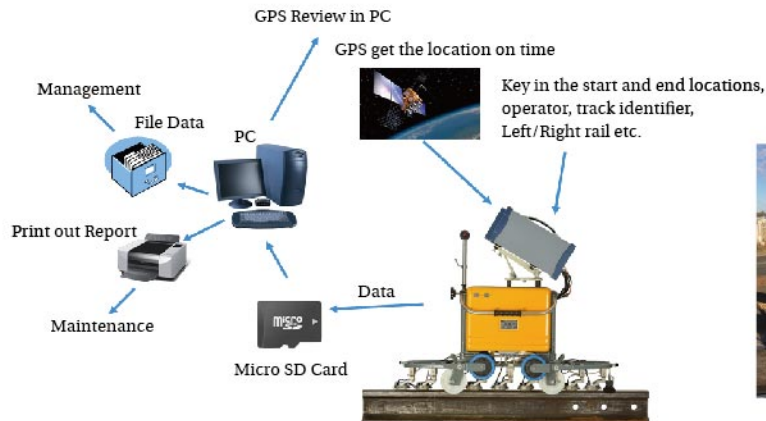
Hand Push RailRover



RailRover is suitable for ultrasonic rail internal defects inspection.

Superior Features

- 9 Individual Transmit/Receive Channels
- A & B Scan Display and Recording
- Self-Testing Function on Probes
- GPS Location System
- DAC on All Probes



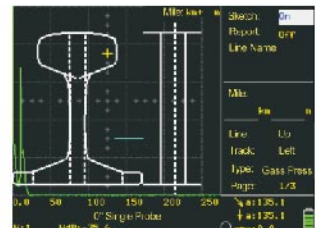
Hand Held RailTek



RailTek is suitable for ultrasonic rail weld inspection.

Superior Features

- Compact and Portable
- Up to Seven Ultrasonic Probes can be Connected
- Easy Operation
- Low Consumption
- Dynamic Recording



Multi-Channel Ultrasonic Flaw Detector Series

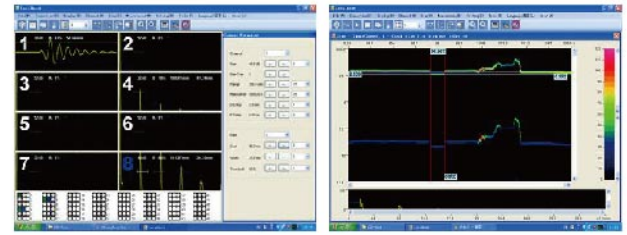


CTS-5XX1

Multi-Channel Ultrasonic Flaw Detector series are based on PC platform. By working with probe detection and mechanical devices, this new series can achieve automatic ultrasound testing with high accuracy, reliability and high efficiency.

Superior Features

- It can support from 32 to 128 channels (four types of housing for 32/64/96/128 channels).
- Each PCB has 8 independent T/R channels.
- For the same PCB, any transmission channel can combine with any receiver channel. Each PCB can have combination up to 8 groups.
- For the same PCB, the channels work in turn. Different PCBs can work at the same time or work in turn.



A-Scan

B-Scan

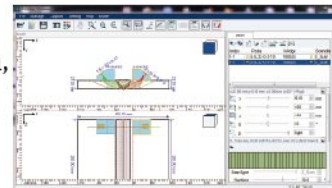
PC Analysis Software

SuporUp

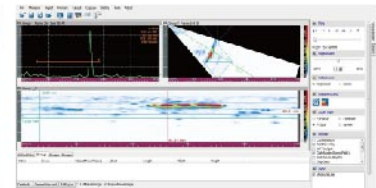
SuporUp is the data analysis software for SyncScan 2, SyncScan, Smartor, SyncScan(Rail Version).



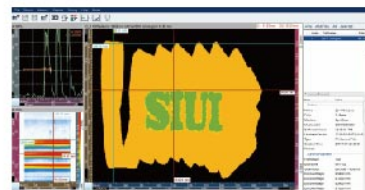
- Dataplay
- Data Analysis Offline
- Image Processing
- Defect Measurement
- Report Generation



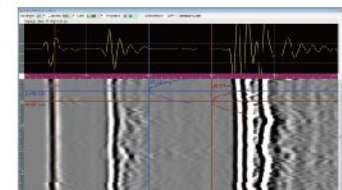
PA emulator mode



PAUT file measurement



Corrosion file measurement

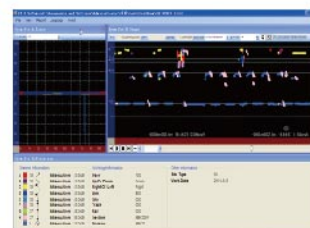


TOFD file measurement

RoverUp

RoverUp is the data analysis software for RailRover and RailTek.

- Browse Function
- Information Display
- Measurement Function
- Report Generation



Ultrasonic Solutions

Austenitic Welds



● PAUT testing

Small Tube Welds



● Low-profile PA testing

Medium Pipe Welds



● Low-profile PA testing

● PAUT+TOFD testing

Long-distance Pipe Welds



● PAUT+TOFD testing

Flange/ Elbow Pipe Welds



● 2 PA testing

Flat Welds



● 2 PA testing

● TOFD testing

Pipe Corrosion



● PA corrosion

Ultrasonic Solution for Rail



● PA testing for weld

● Ultrasonic testing for internal defects

● Ultrasonic testing for weld

Ultrasonic Crawlers

Crawler Technical & Application Matrix

Crawler Model		CUS-01	CPS	LPS	PTS-P05	TSE	PES-02	UHTS-X02	MPS-01A	MPS-02
Inspection Technology	Conventional UT/TG						●			
	PA	●	●	●	●	●	●	●	●	●
	TOFD	●	●	●	●	●		●		
	PA & TOFD		●			●		●		
Application	Weld	●	●	●	●	●	●	●		
	Corrosion	●							●	●

CUS-01



- Modular design for three combinations
- Automatic two-axis PA corrosion mapping
- Automatic PA or TOFD weld inspection

CPS

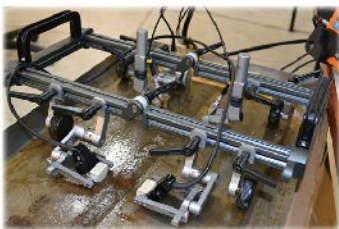


- Special chain design
- Manual or automatic scanning
- Up to 2 PA +2-ch TOFD probes
- For medium & large pipe welds

LPS



- Simple buckle design for quick change links
- Compatible with PA or TOFD probes
- For small & medium pipe welds
- For flange & elbow pipe welds



UHTS-X02



TSE Series



PTS-P05



PES-02 Series

MPS



MPS-01A
(Immersion testing)



MPS-02
(2D scanning)

Irrigation Device



Manual (5L)
IH-05



Auto
IA-01



Auto (18L)
IA-02

Probes and Accessories

The line of ultrasound probe includes normal, angle, dual, immersion, composite probes, TOFD probes and phased-array probes, which can meet different application requirements .

In addition, OEM orders can be accepted subject to specifications and purchase quantity.

Phased Array Probes



TOFD Probes



SIUI can provide:

- A series of PA and TOFD probes for different kinds of inspections
- Customization of PA and TOFD probes with different specifications
- A and TOFD probes with different connectors compatible with equipments from other manufacturers.

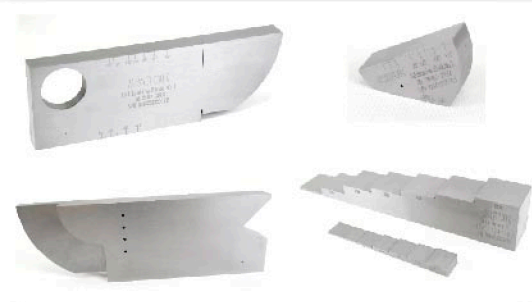
UT Probes



Wedges



Calibration Blocks



Probe Cables



INTERMETRO

Intermetro Serviços Especiais LTDA

R. Joaquim de Almeida, 223 - Mirandópolis, São Paulo
Tel: +55 (11) 5071-2764 | email: intermetro@intermetro.com.br
Website: www.intermetro.com.br